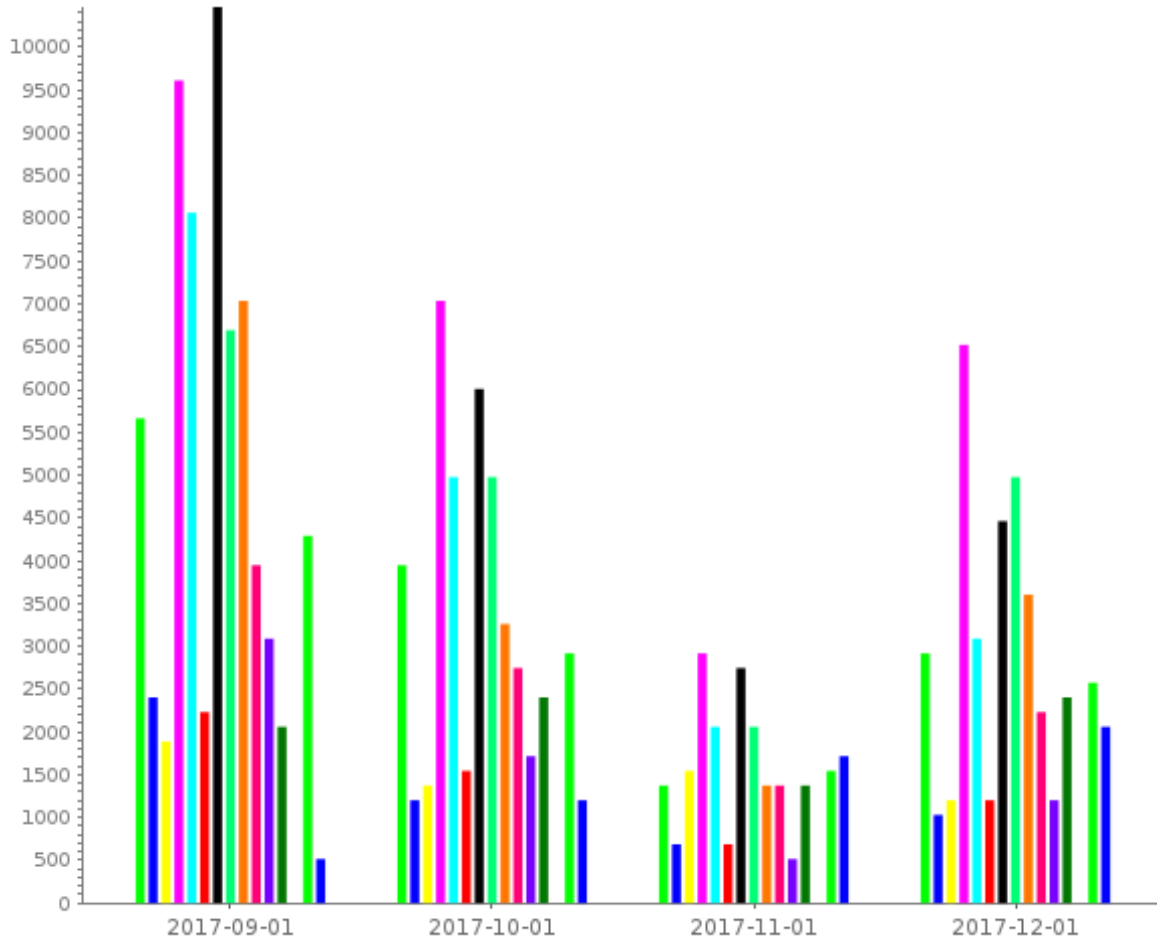


Monthly* totals report

Covering 4 months from 2017-09-01 to 2017-12-31

Report generated on 2017-12-21 by rveronesi@nirpc.org

www.trafx.net



| Site Name | Average | Min | Max |
|-------------------------------|---------|---------|----------|
| (Schererville) EL US 30 | 3,536.1 | 1,543.0 | 5,664.0 |
| (Schererville) Pennsy Rorhman | 1,444.8 | 808.0 | 2,571.0 |
| (Schererville) Pennsy Wilhelm | 1,571.7 | 1,278.8 | 2,006.0 |
| EL Crown Point | 6,615.8 | 3,067.0 | 9,672.0 |
| EL Griffith | 4,623.1 | 2,094.0 | 8,236.0 |
| EL Hammond | 1,511.9 | 795.0 | 2,307.0 |
| EL Highland | 5,981.8 | 2,867.0 | 10,468.0 |
| EL Merrillville | 4,723.4 | 2,071.0 | 6,782.0 |
| EL Scherer/Lake Co | 3,914.8 | 1,461.0 | 7,068.0 |
| Monon | 2,647.3 | 1,396.0 | 4,053.0 |
| OS Griffith | 1,735.3 | 666.0 | 3,230.0 |
| OS Hobart | 2,113.9 | 1,494.0 | 2,469.7 |
| PD Chesterton | 0.0 | 0.0 | 0.0 |
| PD Portage | 2,920.1 | 1,679.0 | 4,356.0 |
| Pennsy Schererville | 1,467.5 | 634.7 | 2,100.3 |

* Based on Average Daily Traffic (ADT)