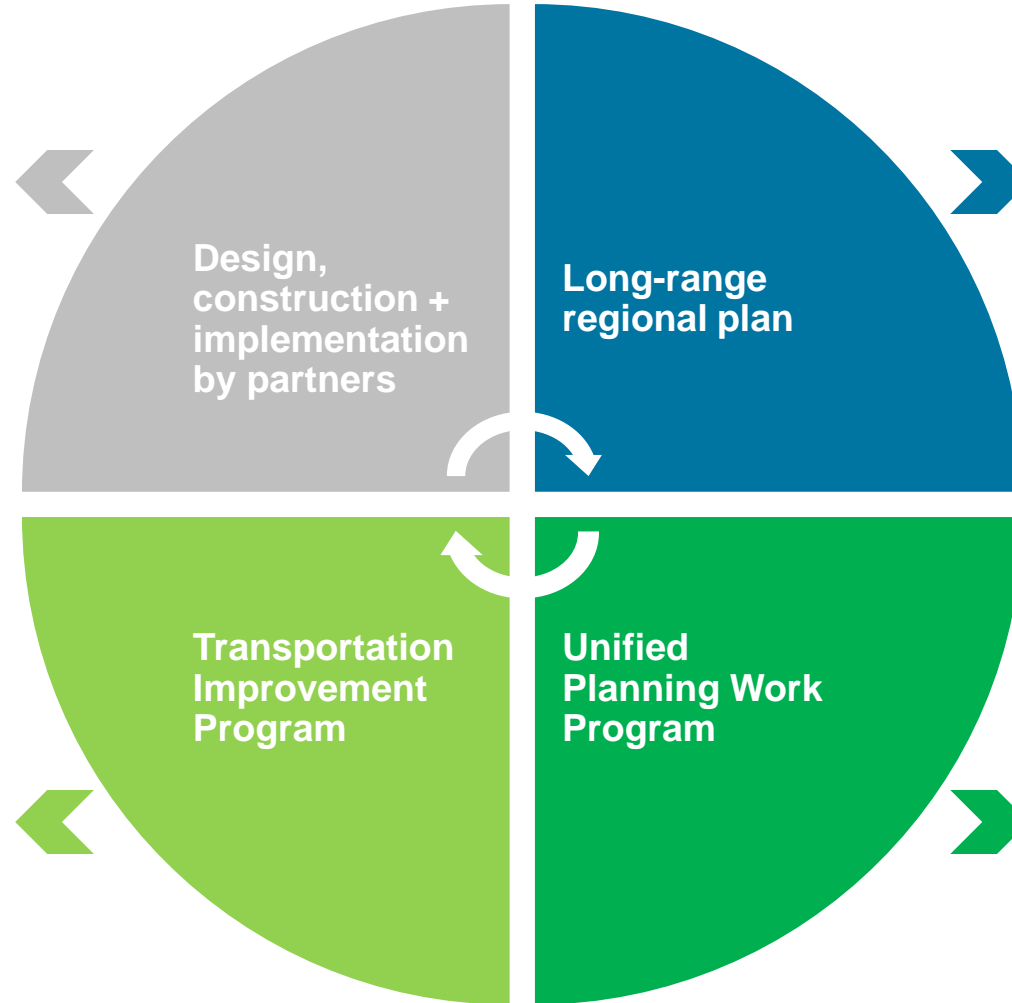


# Vehicular Traffic in South Lake County

**NIRPC's planning activities + investments**

# Planning by NIRPC

- INDOT and LPAs implement the projects contained within the Transportation Improvement Program



- Responds to public feedback and demonstrated needs for transportation system in region
- Sets vision and direction for region
- Required by federal law
- All planning and construction activities must be consistent with the plan
- Must be fiscally constrained
- Projects must not be estimated to exceed air quality budgets

- Program of all construction activities funded by FHWA or FTA in the next four-years
- Contains LPA and INDOT prioritized projects
- Must be consistent with the long-range plan
- Must be fiscally constrained
- Projects must not be estimated to exceed air quality budgets

- Program of all planning activities that NIRPC staff will complete
- Responds to the needs identified in the long-range plan
- Includes planning activities associated with the congestion management process
- Results of planning studies assist in the development of potential construction projects to be pursued by either INDOT or LPAs

## Long-range planning

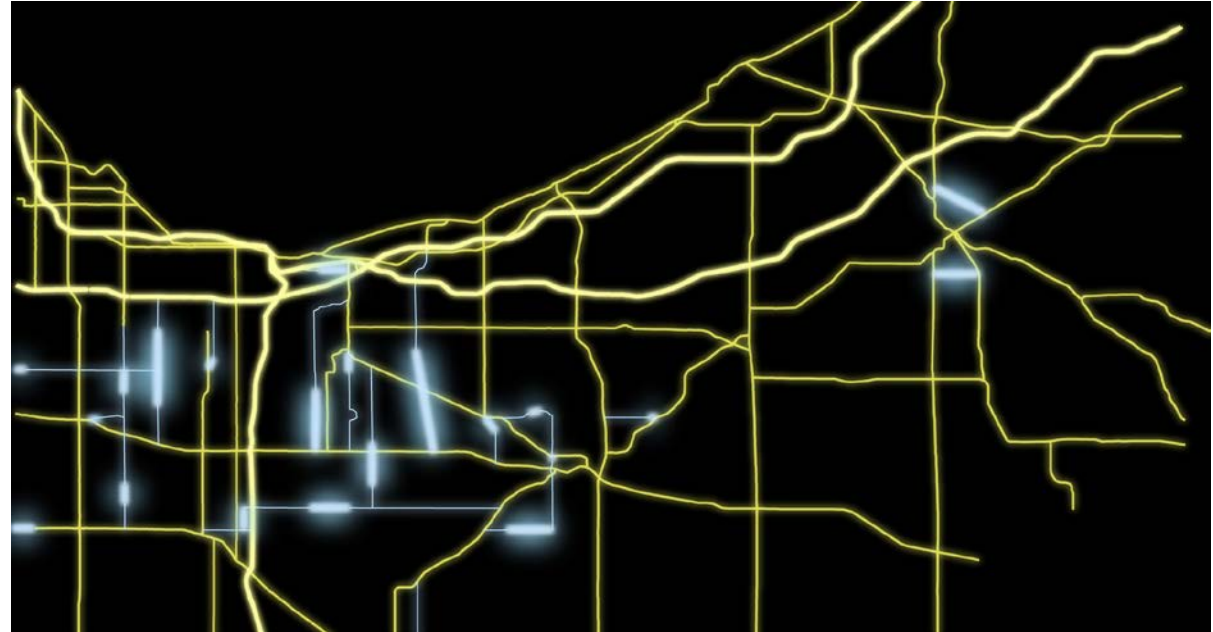
- **2040 Plan**
  - Federally required long-range plan updated every four years
  - **Emphasis areas:**
    - Environmental Justice + Ladders of Opportunity
    - Grow strategically
    - Protect open space + agricultural land
    - Reinvesting in our urban cores
- **2050 Plan underway now**
  - Will consider all of the issues, trends, and influences on our regional future
  - Will engage the public to hear about what they need from their transportation system



## Planning initiatives from 2040 plan

- **Regional Corridors Study** ➔
  - Issues + needs from 2040 plan:
    - Improve the internal connectivity of the transportation network
    - Enhance connectivity between housing, jobs, and educational facilities
    - Reduce emergency travel time
    - Reduce congestion and travel time
    - Poor local/regional north south connectivity and mobility
    - Safety
  - Results:
    - Identified gaps in roadway network between regional highways and local arterials
    - **Main Street and 109<sup>th</sup> Avenue are currently being addressed**

12 of the 22 identified gaps are located south of 57<sup>th</sup> Avenue



# Congestion management process

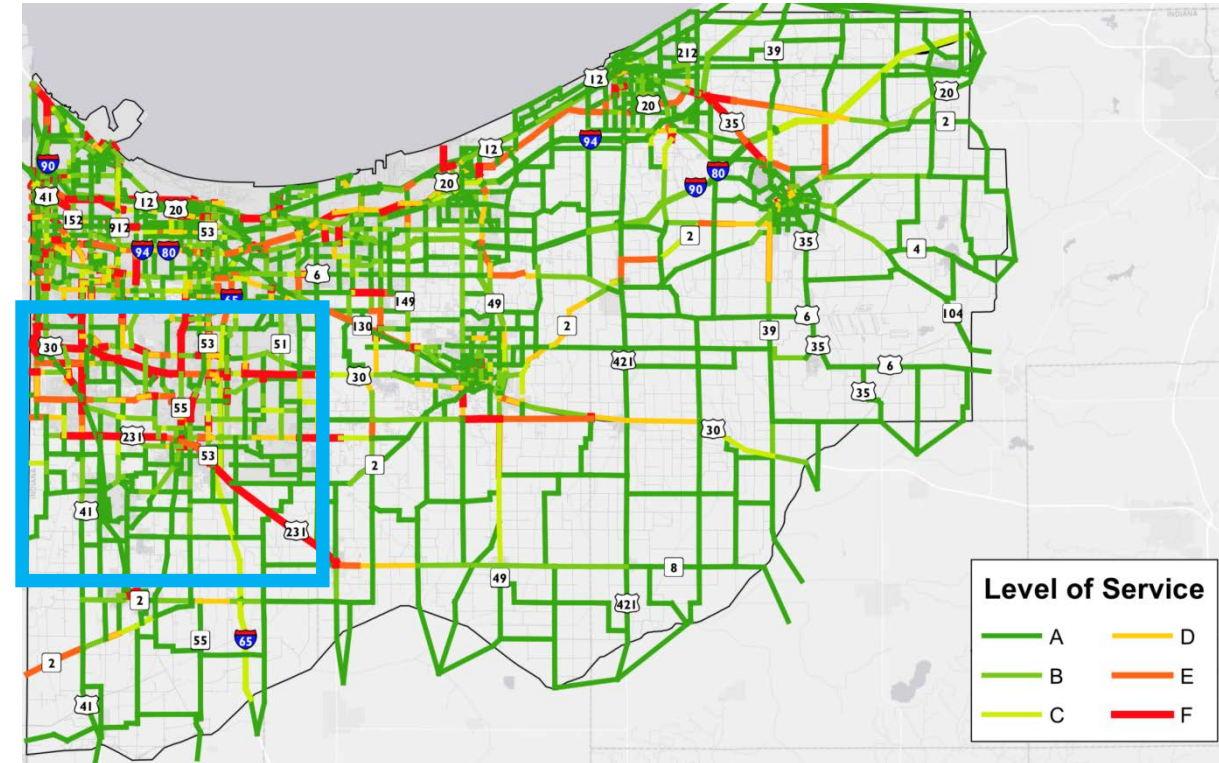
## Roadway level of service

- **South Lake County experiences congestion as expressed by the “level of service” indicator**
  - From the “National Performance Management Research Data Set”
- **Congestion management process**
  - Collect data
  - Consider non-expansion alternatives
  - Select expansions where other alternatives are not available



*Will be updated in the next UPWP*

Where congestion occurs:



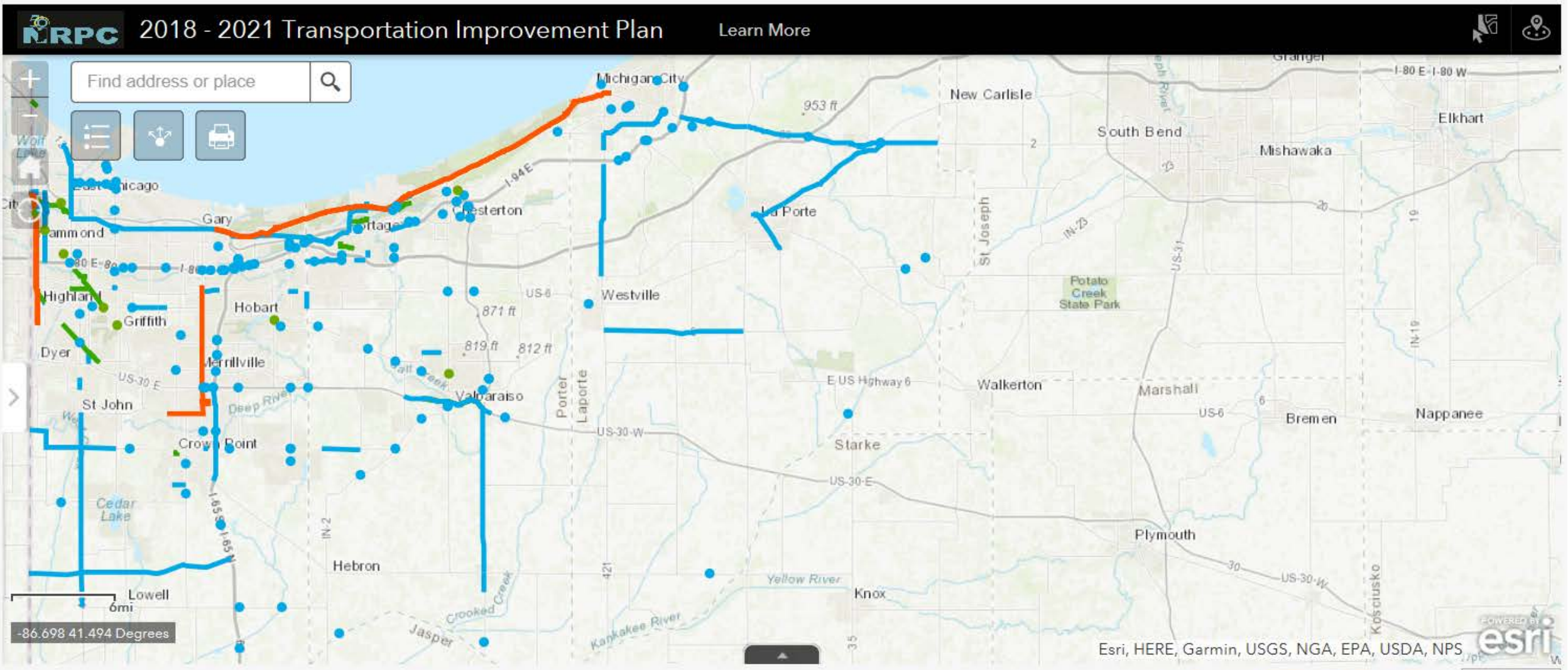
## Background

## Congestion / freight measures

- Per MAP-21 and the FAST Act, USDOT is requiring INDOT and MPOs to measure congestion and set targets for improvements
- Connects the concepts of transportation planning, performance management, and investment programming
- Congestion measures and targets will be set by INDOT no later than May 20<sup>th</sup> and then no later than 180 days later by NIRPC (*likely at the November Commission meeting*)
- Annual hours of National Highway System (NHS) peak-hour excessive delay per capita
- Percent of NHS peak-hour non-single occupant vehicle travel
- Percent of Interstate person-miles traveled that are reliable
- Percent of non-Interstate NHS person-miles traveled that are reliable
- Level of Truck Travel Time Reliability on the Interstates

# Locations of currently programmed projects

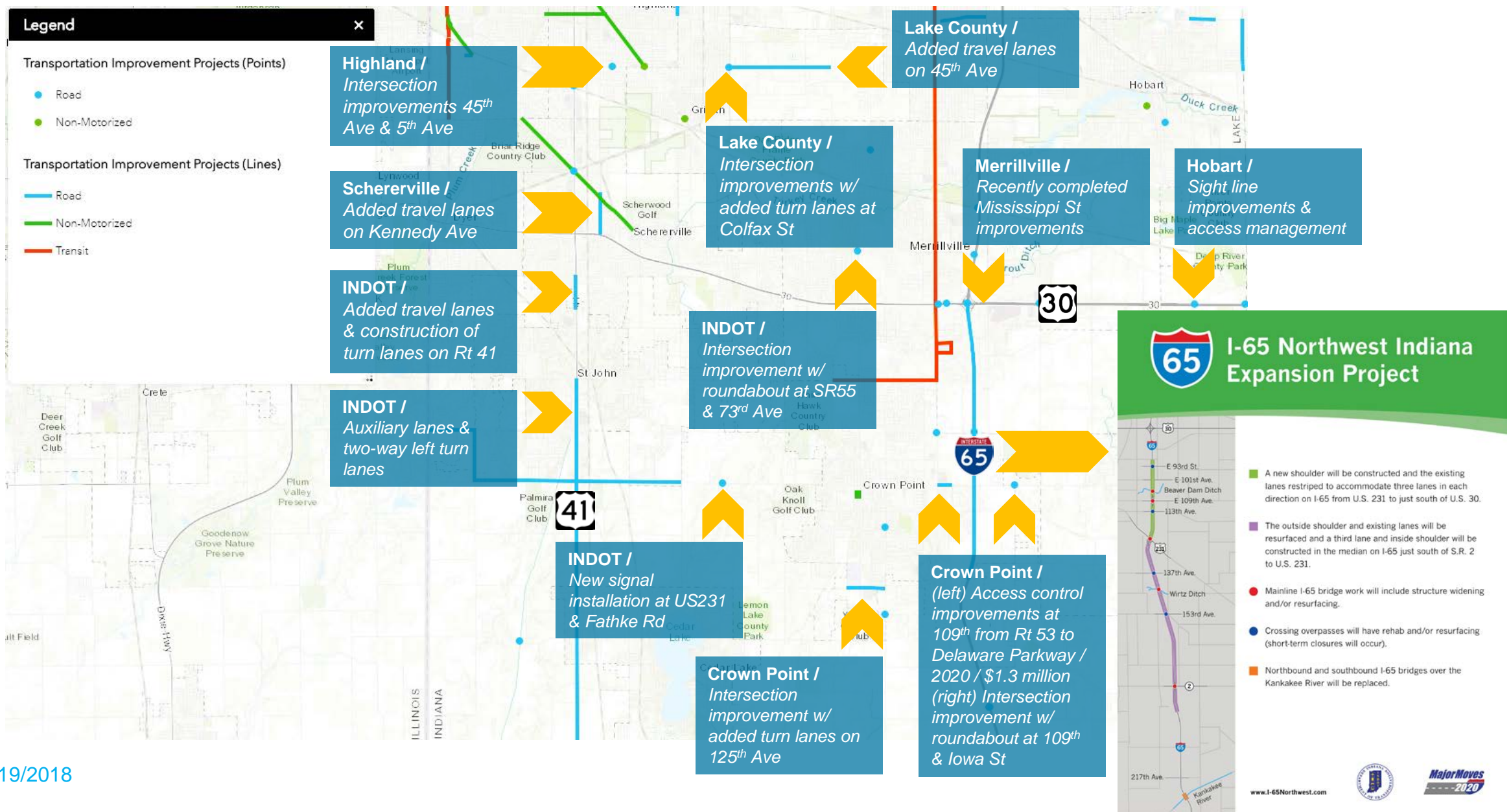
<http://www.nirpc.org/fy-2018-2021-tip/>



Source: <https://nirpc.maps.arcgis.com/apps/webappviewer/index.html?id=5c240e0401cd4121e024e4b2562c5d7c>

Web Viewer Terms | Privacy & Cookies Edit

# Roadway investments







## NIRPC plans...



## ...INDOT and municipalities invest



- NIRPC documents challenges and opportunities within our region through planning activities conducted with federal, state, and local partners
- NIRPC's planning results in recommendations on transportation investments, land-use, economic development, and more
- However, NIRPC is not directly responsible for executing those recommendations and relies on its state and local partners to carry out improvements
- INDOT and municipalities initiate transportation projects to address opportunities and challenges we face regionally
- Resources available for our local partners from FHWA via the TIP are constrained at **~\$20 million per year**
- Municipalities are responsible for providing match to FHWA funds for right-of-way acquisition, engineering, permitting, construction, and construction engineering

# Thank you

*Contact name*

Trey Joseph Wadsworth

*Email*

[twadsworth@nirpc.org](mailto:twadsworth@nirpc.org)

*Website*

<http://www.nirpc.org/2040-plan/transportation/congestion/>

*Facebook*

<https://www.facebook.com/nirpcmpo/>

*Twitter*

<https://twitter.com/NIRPC>

*Phone*

(219) 763-6060

*Address*

6100 Southport Rd Portage, IN 46368