



6100 Southport Road
Portage, Indiana 46368
(219) 763-6060
www.nirpc.org

Transportation Resource Oversight Committee Meeting (Lake & Porter Counties)

Tuesday, August 27, 2019

9:00 am CST at NIRPC Office

Agenda

1) **Call to Order by Chairman and Pledge of Allegiance**

2) **Meeting Minutes of May 28, 2019**

ACTION REQUESTED: Approval

3) **Public Comments**

This is an opportunity for comments from members of the audience. The amount of time available to speak will be limited to 3 minutes. Commenters must indicate their wish to comment on the sign-in sheet.

4) **Engage NWI Public Participation Plan**

Staff will present a brief overview with a handout on the recently adopted Public Participation Plan.

ACTION REQUESTED: Informational

5) **2020-2024 Transportation Improvement Program Proposed Amendment**

Staff will present on the proposed Amendment #2 that contains the recommendations of the TPC Working Group on TIP Continuous Improvement among other proposed changes to the 2020-2024 TIP.

ACTION REQUESTED: Vote to Recommend

6) **Region Transportation Improvement Program (RTIP)**

a) RTIP Read-Only Access is available to consultants

b) Overview of submitting an amendment, and other features of RTIP

ACTION REQUESTED: Informational/Instructional

7) **New Business**

a) Invoices to INDOT reinforcement of one per month.

b) TIP Continuous Improvement Update

c) TROC Monthly Report Coming Soon

Monthly report will include letting results, project programming risk assessment based on quarterly tracking meetings, and update on fiscal constraint of TIP.

8) **Adjournment.** The next TROC Lake/Porter Meeting is scheduled for November 26, 2019 at 9 a.m. in the Lake Michigan Room at the NIRPC office.

Transportation Resource & Oversight Committee
Lake & Porter Counties
6100 Southport Road, Portage
May 28, 2019
Meeting Minutes

In attendance were Chairman/Commissioner Jim Biggs, Dean Button (Hammond), Jeff Huet (Schererville), Adam McAlpine (Valparaiso), Commissioner George Topoll (Union Township), Jill Murr (Cedar Lake), Bob Thompson (Porter County), Jeff Sheridan (Lowell), Mark Gordish (Hammond), Bob Fulton (Hobart), David Wright (GPTC), Sarah Kobetis (Gary), Craig Zandstra (Lake County Parks), Jake Dammarell, and Trisha Nugent.

NIRPC staff included Charles Bradsky and Candice Eklund.

Call to Order and Pledge of Allegiance

Jim Biggs called the meeting to order at 9:04 a.m. with the Pledge of Allegiance.

Approval of Minutes

On motion by Dean Button and second by Mark O'Dell, the March 26, 2019 TROC Lake and Porter meeting minutes were approved as presented.

FY 2020 Fiscal Constraint Report

Charles Bradsky presented the Fiscal Constraint Report generated from the new Regional Transportation Improvement Program (RTIP) system. Charles noted the report currently does not reflect the special funds such as HSIP, STBG, CMAQ and TA. These funding categories will be incorporated into the report for the next meeting, in addition to reporting the individual years for 2021-2024.

Dean Button inquired why the total funding programmed for fiscal years 2020 and 2021 reflected higher totals in comparison to other years. Charles explained the totals were correct but the line items for the transit projects had been omitted from viewing.

Amendment Status & Project Requests

Charles Bradsky informed the Committee that during the local quarterly meetings he was made aware of two projects that will not be moving forward in 2020 and will be removed from the current TIP.

The project for the City of Hobart, DES #1401034, is a legacy project and was underfunded at \$734,850. Bob Fulton requested moving the construction funding programmed in 2020 for right-of-way (ROW) acquisitions from 2024 to 2020, moving the construction phase to 2024 (or beyond) on the same project. Charles Bradsky asked the group about clarification for the rules limiting PE & ROW to \$200,000 or 7.5% of CN costs. Dean Button stated that the 7.5% should only apply to projects selected under the new NOFA, but was unsure about the \$200,000 limit. Jeff Huet mentioned that under the old programming rules HSIP project were excluded from the \$200,000 limit. On motion by Dean Button and Second by Bob Fulton, the Committee approved moving the funding of \$734,850 from construction costs to right-of-way acquisitions in 2020. The City of Hobart understands that they will need to apply for construction phase again in the next NOFA.

With this approval, \$555,040 remain in available federal funding for FY 2020. Charles stated that at the next TROC meeting TROC will decide where to put these funds.

Letting Results Update

The three lettings in April were all awarded. DES #1600418 for Gary came in 5% under budget, DES #1601159 for Valparaiso came in 7% over the estimated budget and DES #1601726 for Winfield came in slightly over budget.

Charles Bradsky stated all projects will no longer have a letting date after February. Letting dates after February could result in not having enough flexibility to adjust schedules and can put a constraint on reallocating the funds timely and risks the funds being returned to INDOT/FHWA.

Other New Business

Charles provided a demonstration of the RTIP system and held a Q & A session. Charles also requested all Local Public Agency's (LPA's) access the system and request a login if they had not already done so. The RTIP can be viewed by the public on NIRPC's website or accessed by the Employee Representing the Community (ERC's) at <https://rtip.nirpc.org/secure2>. Jim Biggs suggested Charles send a group email to the committee to re-visit the RTIP with instructions and utilization of the system.

The response to the new RTIP system has been positive. After each LPA enters their projects into the system, Charles will receive an email confirmation to either approve or notify them with any questions. To continue using the LTAP system to enter project information, send an email to Charles, who will forward the request to INDOT.

The Technical Planning Committee (TPC) created a working group to review the 2019 NOFA procedures and create the NOFA for 2020. This new working group will include two members each from Lake, LaPorte and Porter Counties, one transit operator from each county, one consultant, and three NIRPC staff (Trey Wadsworth, Charles Bradsky and James Winters). The first meeting is scheduled for June 18, 2019 and will continue until July 2020. Jim Biggs inquired the process for selecting the one consultant. Charles stated NIRPC leadership created the list of working group members. Jim Biggs said he felt it would be more appropriate for the TPC committee to decide the members, or rotate members to be fair to the other firms, rather than NIRPC leadership making the decision. Correction: NIRPC leadership did not make the decision on the working group make-up. Since this is a TPC working group, the TPC Chairman decided the list of working group members in consultation with NIRPC leadership.

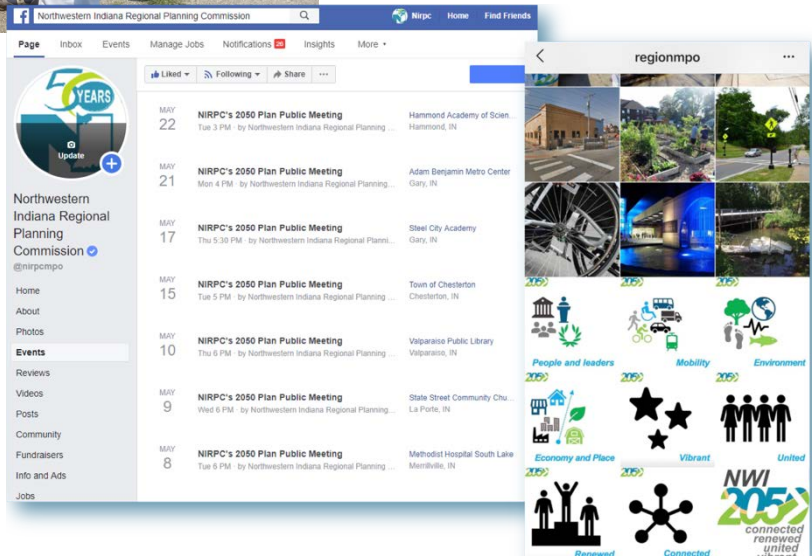
Jeff Huet questioned when the projects that were added to the spending plan by NIRPC staff would be vetted. Charles offered the projects would be discussed at the first meeting, the results would be brought before the TPC Committee in July and then go through a 30-day public comment period.

Public Comments

There were no public comments.

Adjournment

There being no further business, the meeting adjourned at 9:56 a.m.
The next meeting is scheduled for August 27, 2019 at 9:00 a.m.



Engage NWI

Northwestern Indiana Regional Planning Commission's Public Participation Plan – Adopted August 15, 2019 by Resolution 19-24

This page intentionally left blank.

About Engage NWI

Engage NWI is the federally required “Public Participation Plan” that enables Northwestern Indiana Regional Planning Commission (NIRPC) staff to ensure that it is meeting all federal requirements for public participation, but more importantly, a guide that enables the public to engage with regional planning. *Engage NWI* promotes a meaningful exchange of ideas, identification of regional issues and solutions, as well as advancing initiatives to achieve the vision for Northwestern Indiana (NWI).

The Northwestern Indiana Regional Planning Commission (NIRPC), as the Metropolitan Planning Organization (MPO) and Council of Governments (COG) for NWI, has the responsibility to conduct economic development, environmental, and transportation planning for Lake, LaPorte and Porter Counties. *Engage NWI* is required of a Metropolitan Planning Organization (MPO) by the United States Department of Transportation (USDOT) to fulfill the regulations governing public participation (**23 CFR 450.316**).

Engage NWI is laid out in a question and answer format to assist NWI’s general public and stakeholders, and NIRPC’s regional planners to understand:

- ▶ How the general public and stakeholders can most effectively connect with regional planning – **Page 3**
- ▶ What is regional planning? **Page 4-5**
- ▶ When/where is the public engaged in regional planning? **Page 6**
- ▶ Why is public participation important to regional planning? **Page 7-8**
- ▶ Who is and should be involved in public participation? **Page 8-10**
- ▶ How is public participation conducted? **Page 11-13**
- ▶ The technical requirements of public participation **Page 14-16**

How to follow regional planning activities and find participation opportunities:

- ▶ **Website:** nirpc.org
 - ▶ Sign-up for emails and newsletters here
 - ▶ Follow our calendar for events and meetings
 - ▶ Find NIRPC’s latest plans and updates
- ▶ **YouTube:** youtube.com/user/NIRPCPlanning
 - ▶ For livestreamed Commission and Committee meetings if you cannot or do not want to attend in-person
- ▶ **Facebook:** facebook.com/nirpcmpo
 - ▶ Like NIRPC’s Facebook page to follow planning activities and learn about engagement opportunities.
- ▶ **Twitter:** twitter.com/NIRPC

- ▶ Follow NIRPC's Twitter feed to hear the latest news and learn about engagement opportunities.
- ▶ **Instagram:** [instagram.com/regionMPO](https://www.instagram.com/regionMPO)
 - ▶ Follow NIRPC's Instagram page to see what is going on in the region and learn about NIRPC's work.
- ▶ **LinkedIn:** [linkedin.com/company/nirpc](https://www.linkedin.com/company/nirpc)
 - ▶ Connect with NIRPC's LinkedIn page to learn about NIRPC's work and other planning partners.
- ▶ **RTIP:** <https://rtip.nirpc.org/>
 - ▶ The Regional Transportation Improvement Program is NIRPC's online database of funded transportation investments throughout the region. Amendments are posted on RTIP when available for public comment.
- ▶ **Direct mail:**
 - To be added to our direct mail list, please send a request for newsletters:
Public Participation Planner
6100 Southport Road
Portage, IN 46368

What is regional planning?





Regional planning in NWI is conducted by NIRPC regional planners. NIRPC is charged in state law to focus on economic development, the environment, and transportation planning. NIRPC provides a regional forum to discuss issues, opportunities, problems, challenges, and concerns of member communities, the general public, and stakeholders. Regional planners work planning initiatives each year that will hopefully advance NWI towards achieving the visions laid out in the adopted long-range plan of the Commission, the *NWI 2050 Plan*.

It is important to note that while regional planners may provide guidance on best practices, policy, zoning, transportation investments, economic development, or the environment, they do not make or enforce local ordinances or policies, as NIRPC is not charged with this mandate, nor given authority to do so, in state or federal law. In order to affect change locally, participation efforts by the general public and stakeholders must be geared towards local, state or federal government. Regional planners often may not lobby under federal law, rather may only educate or guide elected officials.

For regional transportation planning, NIRPC must follow the federally required "3C" transportation planning process. The "3C" transportation planning process requires cooperation among all levels of government, comprehensive consideration of many planning factors, and be a continuously evaluated planning process. Planning is carried out following contemporary federal transportation

planning requirements of the Fixing America’s Surface Transportation Act (FAST Act), the Americans with Disabilities (ADA) Act, Section 504 of the Rehabilitation Act, Environmental Justice Executive Order 12898, Persons with Limited English Proficiency Executive Order 13166, the Clean Air Act, Title VI of the Civil Rights Act, and their predecessor acts. *Engage NWI* reflects all such requirements, especially those of [23 CFR 450.316](#), the regulation that governs public participation.

Regional planners at NIRPC are responsible for the following:

-  *Economic development, environmental, and transportation planning*
-  *Technical assistance on planning best practices, and governance*
-  *Providing a forum for regional issues identification and problem solving*
-  *Facilitation of the prioritization of transportation investments for NWI*

Public participation and transit

Transit is an important travel option for many residents in the region, and many instances the only travel option for some residents. Transit in NWI consistently is rated by the public as a primary concern for our regional transportation system. The *NWI 2050 Plan* and the *2018 Coordinated Transit Plan* demonstrate those issues and concerns.

The Federal Transit Administration allows a transit operator to rely on the MPO’s Public Participation Plan for the Transportation Improvement Program. For transit operators to be compliant with Federal “Program of Projects” requirements, transit operators may utilize the public participation efforts of regional planners. Projects need to be published in sufficient detail, and the users of these projects should be provided an opportunity to examine the proposed program and submit comments. Transit Operators therefore must assist NIRPC with public participation efforts, including advertising and inviting the public to engagement opportunities.

When/where is the public engaged in regional planning?

There are three core MPO planning documents out of which all other regional planning activities are derived:

- ▶ **Long-Range Plan (LRP)** – The LRP sets the vision for NWI and focuses on economic development, the environment, and transportation. The LRP is updated every four years and is amended from time to time. The development of the MTP takes approximately one to two years and engagement opportunities are provided throughout its development to shape the vision, goals, and priorities of the Plan.
- ▶ **Transportation Improvement Program (TIP)** – The TIP is updated every two years and amended four times per year. The TIP includes transportation investments for the next five years made by communities, transit operators, and the Indiana Department of Transportation. The development of the TIP involves all the towns, cities, counties, and transit operators of NWI and must be consistent with the *NWI 2050 Plan*. Direct engagement with municipalities and transit operators is the most effective way for the public to influence the projects each applicant submits to NIRPC for funding.
- ▶ **Unified Planning Work Program (UPWP)** – The UPWP is updated every two years and amended in between generally once. The UPWP contains all the planning activities required by the Federal Highway and Transit Administrations in addition to planning activities identified by the *NWI 2050 Plan*. The planning tasks are conducted by the regional planners at NIRPC. Each UPWP task includes a public participation goal appropriate for the task: Inform, Consult, Involve, or Collaborate. **See page 15 for details on goals.**

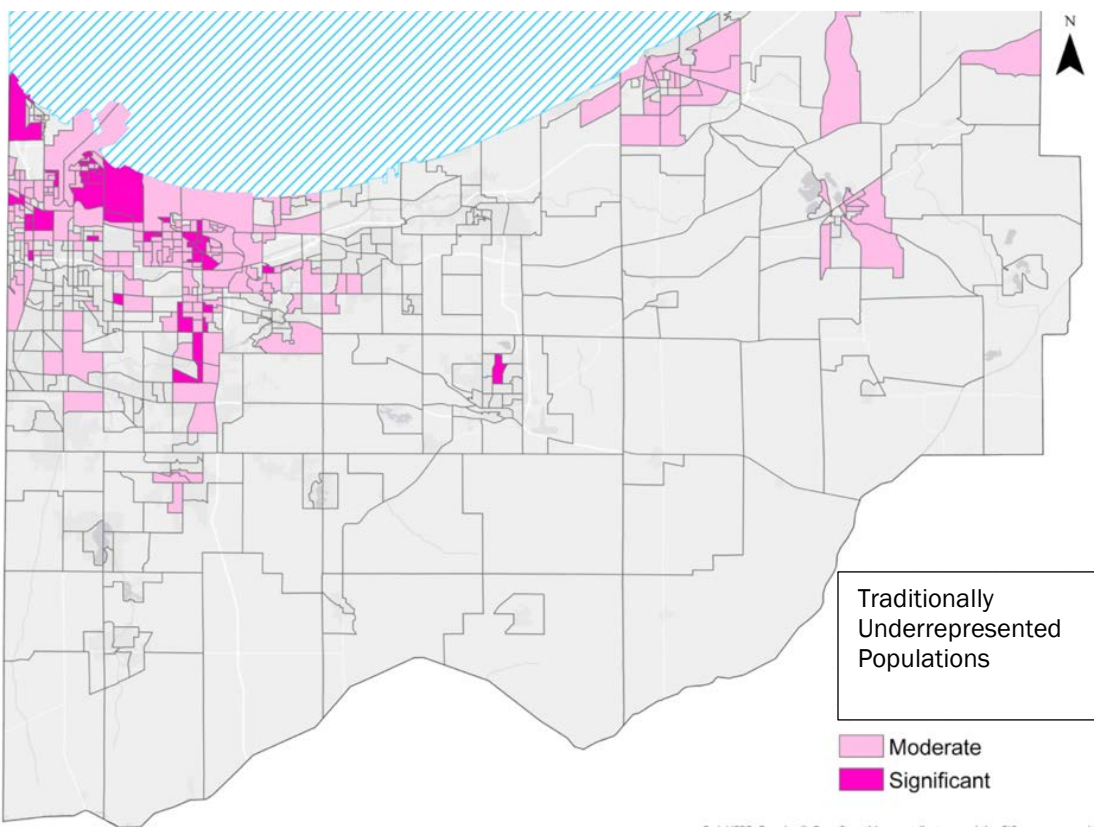
Understanding the core planning activities of NIRPC will help to connect interested individuals on when and where to engage in regional planning.

Engage NWI emphasizes that for effective regional planning, engagement should occur where people are, and early in the process. Input will be solicited from the general public and stakeholders when active engagement methods are utilized (described on Page 16), close to where the general public are already gathering and while plans are in development so that input can shape the outcome which is deliberated at the Commission. Every attempt will be made to hold active engagement activities throughout the region, balanced where transit is available and for the rest of the region, through a variety of creative means while plans are in development. The Commission will determine where and when to hold its meetings and those of its advisory and business committees.

Why is public participation critical to regional planning?

Engage NWI stresses the need for the general public and stakeholders to engage in regional planning to identify regional challenges, problems, and opportunities. Regional planners need to listen to voices of the general public and stakeholders to gain a diversity of input – especially from those traditionally underrepresented in planning processes – and hear potential solutions or to shape planning processes and achieve desired outcomes. The map on Page 9 represents the places in NWI that should be emphasized in engagement efforts. These places include higher than regionally average areas of minorities, low-income individuals, limited-English proficiency individuals, zero-car households, veterans, individuals over sixty-five years of age, and individuals with disabilities. Regional planners need input early in the process so that final plans can reflect a balance of priorities and interests heard from all over the NWI.

Engage NWI stresses the importance that additional effort be made to invite individuals that reside in such areas to participate in regional planning efforts to give voice to communities who have traditionally been under-represented.



Strategies to engage with emphasized places in NWI

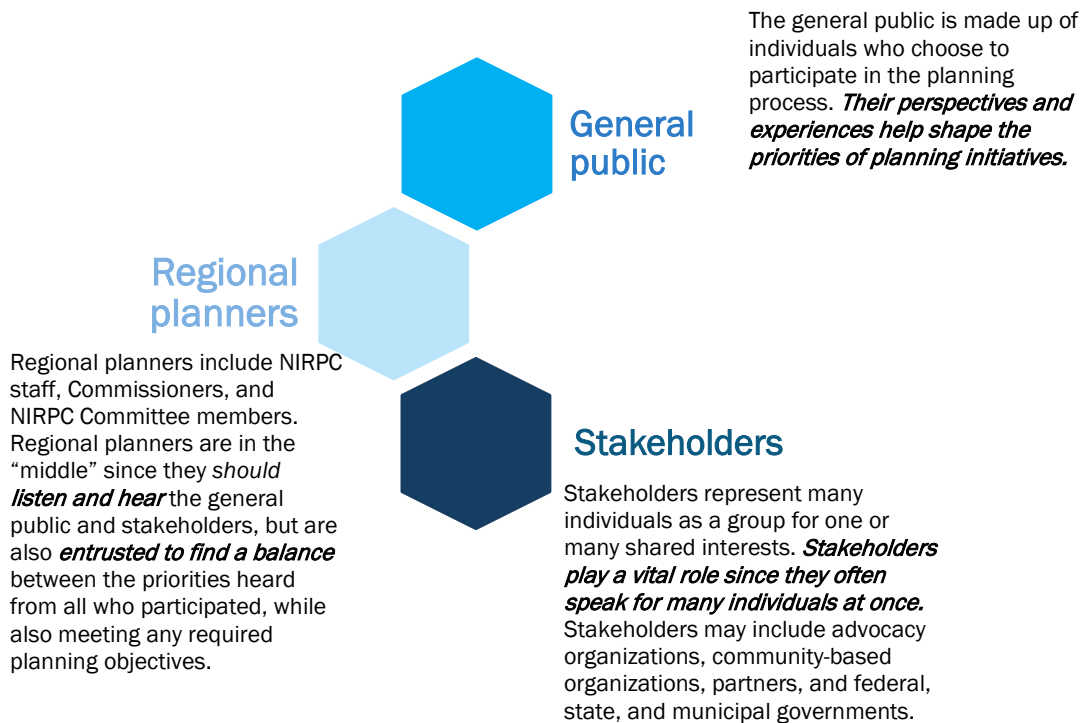
- ▶ **One-on-Ones** – depending on the planning activity, regional planners may make face-to-face contact with community-based organizations, neighborhood leaders, faith-based organizations, elected officials, and other important stakeholders that can connect regional planners to residents and businesses that have been underrepresented in regional planning activities. Such interactions are called “*Out and Abouts*” in *Engage NWI* and are described on Page 13.
- ▶ **Targeted formal engagement** – depending on the planning activity, regional planners may ensure that some of the formal meetings or “*Pop-Up Events*,” described on Page 13, are held in these emphasized places to make participation convenient, especially if community residents rely on limited public transit.

Who is and should be involved in public participation?

Engage NWI focuses upon “regional planners,” “the general public,” and “stakeholders” as three critical groups involved in public engagement. Each plays a unique and important role in the planning process. Regional planners at NIRPC seek to undertake various planning initiatives that need to be shaped by public input. The general public includes individuals and businesses that represent themselves in the planning process, while stakeholders represent “grouped” interests, needs, or desires in the outcome of a planning process. The perspectives, experience, and expertise from the general public, or stakeholders, is not only welcomed, but necessary in the planning process.

Shaped by their personal experiences, regional planners do not know and cannot see every detail of every issue in every community. Therefore, *Engage NWI* stresses the need for regional planners to listen to the general public and stakeholders as a duty, but also for the general public and stakeholders to share their perspectives, experiences, and expertise as regional citizens.

For *Engage NWI* to be effective, NIRPC, as the regional planners, will inform the general public and stakeholders of every opportunity to participate through the channels described on Page 3; however, the general public and stakeholders have the freedom to take advantage of the opportunity to play their part and actively engage in shaping their region.



About the regional planners - NIRPC

Regional planning and coordination came to Northwestern Indiana in 1965 when enabling legislation was passed by the Indiana General Assembly and signed into law by the Governor. The first state law called for a transportation planning commission, which was inspired by the 1962 Federal Highway Act. The state law has since been amended to create what is known today as the Northwestern Indiana Regional Planning Commission, a three-county council of governments. In 2007, NIRPC’s Executive Board membership expanded, and weighted voting added.

NIRPC’s governing body is the Commission composed of 53 county, municipal, and some township elected officials and a Gubernatorial appointment. The Commission membership is established in state statute and is required to meet in full at least four times per year and at a minimum statutorily responsible for the hiring of the Executive Director, adopting bylaws, electing officers, and annual budget appropriations. A smaller Executive Board is annually elected by and from the full Commission membership and takes on the routine business of NIRPC. The Commission has established several committees to make advice and assist in conducting its business along with lower topical committees focused on specific

interests. Please check NIRPC.org for updates on the committee structure and membership.

All Commission and committee business related to transportation planning and investment decision-making must adhere to *Engage NWI*. Planning for economic development and the environment may adhere to *Engage NWI* or the specific requirements of grants funding those activities in question. Noticing for Commission and Committee meetings will follow Indiana Open Door Law.

Commission	Full Commission <i>Meets four times per year or</i>
	Executive Board <i>Meets approximately six times per year</i>
Advisory / Business Committees	Technical Planning
	Local Government Assistance
	Legislative
	Finance and Personnel
Topical Committees	Environmental Management and Policy
	Ped, Pedal, and Paddle
	Land Use
	Surface Transportation
	Transit Operators
	Transportation Resources Oversight

Last revised February 2018 / Any future changes to committee structure made by the Commission will be reflected in Engage NWI as a technical amendment.

How is public participation conducted?

Engage NWI lays out on Page 12 the engagement goals, the promise made by Engage NWI associated with that goal, engagement methods associated with each goal, and the when the goal will be chosen for each planning task. Then all the technical requirements of *Engage NWI* are laid out (Page 14-16). Input from the general public and stakeholders early in the process is critical to shaping the final outcomes of each plan. With a diversity of perspectives in a region as large as NWI, it will be up to regional planners to find a balance between competing priorities and interests for the region. Before plan adoption by the Commission, the plan will be put out for a formal comment period, if required.

Techniques to invite participation

Engage NWI outlines methods to ensure regional planning is conducted with participation always at mind from the beginning of planning processes. Each planning task undertaken will identify a participation goal appropriate for that task (Page 12) and then planners will employ the methods that goal requires. It is expected that most tasks will be on the more participatory end of the spectrum.

However, no matter which type of participation goal that is required, participation will be possible in formats that are inclusive. All meeting locations will be compliant with the ADA and requests for reasonable accommodations taken upon request within 72 hours of a formal meeting to ensure participation those who may need alternate formats of materials – including language translation, foreign, American Sign Language, or braille.

Active participation methods				
Does the task require?	Inform	Consult	Involve	Collaborate
Engage NWI goal:	Provide public with objective information and assist their understanding of regional challenges, options, opportunities, or solutions.	Obtain feedback on regional planning tasks, analyses, or prior to policy making.	Work directly with public and stakeholders throughout planning process to ensure concerns and ideas are consistently understood and considered.	Partner with the public and stakeholders in every aspect of the planning process from project scoping through adoption of plans or policies.
Engage NWI promise	Keep general public and stakeholders informed.	Keep public informed, listen and acknowledge concerns and ideas, and provide public with report on how input shaped outcomes.	Work with public and stakeholders to ensure goals and ideas are directly reflected in planning work as much as possible and report on how input shaped outcomes.	Work with public and stakeholders to inform planning work from start at project scoping to understand issues, generate solutions, and incorporate feedback to shape outcomes.
Involvement methods / tools may include:	Website, social media, newsletters, multi-language publications, press releases, mailings, live streaming, white papers, or fact sheets.	Activities listed in “Inform” plus surveys, comment forms, webinars, or formal meetings	Activities listed in “Consult” plus focus groups, targeted outreach to meet people where they are such as “Out and Abouts,” or “Pop-up Events”	Activities listed in “Involve” plus task forces, charrettes, keypad polling, and working groups
When goal will be selected:	The “Inform” level of participation will be used for technical documents, but the methods will be used frequently to communicate regularly with the public	The “Consult” level of participation will be used less frequently, but the methods will be used when needed	The “Involve” method will be used frequently and the methods as well	The “Collaborate” method will be used frequently with major planning processes

Examples of active engagement

Some types of active and in-person engagement will be conducted by employing the following:

- ▶ **“Out and Abouts”** – regional planners meeting face-to-face to invite interest in planning activities, events or to solicit direct feedback
- ▶ **“Pop-up Events”** – regional planners sharing information / asking for feedback at other organization’s events
- ▶ **Formal meetings** – advertised open houses or public hearings – timely notice per *Engage NWI* for all public meetings listed in the table to the right will be two weeks prior to the meeting.
- ▶ **Task force / working groups** – invited and targeted participation of subject matter experts at the discretion of the NIRPC Executive Director

Effectiveness of methods and evaluation

From time to time the strategies and methods contained within *Engage NWI* will be reviewed for their effectiveness. The principal measure for effectiveness of *Engage NWI* will be:

- ▶ The frequency in which planning activities are conducted with the “Involve” or “Collaborate” goal of active participation methods described on Page 12 – should be at least 50% of activities; and
- ▶ How aggressively regional planners have made attempts to invite participation from the general public and stakeholders throughout the planning process. Opportunities include advertising, “Out and Abouts,” “Pop-Up Events,” social media or newsletter content, etc.

A summary of public participation efforts by regional planners will be published in the “Performance Report” recommended in the *NWI 2050 Plan*.

Technical aspects of public participation:

Public comment periods and public meeting requirements Core planning documents	Minimum comment period by law	Engage NWI comment length policy	Engage NWI formal meeting policy
Long-range plan (<i>new adoption</i>)	Not specified in federal law	30 days	Required
Long-range plan <i>Policy/Project amendment</i>		21 days	Not required
Long-range plan <i>Modification / Technical amendment</i>		None	Not required
Transportation Improvement Program (TIP) (<i>new adoption</i>)		30 days	Required
<i>TIP amendment</i>		21 days	Not required
<i>TIP modification / technical amendment</i>		None	Not required
Air Quality Conformity		30 days	Required
Unified Planning Work Program (<i>new or amendment</i>)		None	Not required
Coordinated Public Transit Human Services Transportation Plan (<i>new or amendment</i>)		21 days	Not required
Public Participation Plan (<i>new or amendment</i>)	45 days	45 days	Not required
Other planning and policy documents			
Regional and sub-regional modal, corridor, development, or environment plans/policies	Not specified in federal law	21 days	Not required
Technical documents required to fulfill federal requirements		None	Not required

Amendment and modification procedures

Amendment:

- ▶ **1)** any phase of any project is added or construction phase or transit project deleted;
- ▶ **2)** any addition of funds over \$100,000;
- ▶ **3)** change to an air quality non-exempt project;
- ▶ **4)** project scope change that alters original intent of project;
- ▶ **5)** change to policy or programming rules.
- ▶ Interagency Consultation Group review on *all* TIP amendments and a redetermination of fiscal constraint is required. **Twenty-One day comment period required.**
- ▶ Must be approved by Commission or Executive Board. **Public comment opportunity is available at the meeting.**

Modification:

- ▶ **1)** project moving year to year (but not out of the TIP, which is an amendment);
- ▶ **2)** project fund source change;
- ▶ **3)** project is split into multiple construction segments;
- ▶ **4)** addition of funds under \$100,000 (TIP and UPWP); *or*
- ▶ **5)** typographical changes.
- ▶ Modifications are made by NIRPC staff at the request of project sponsor subject to regulation and funding availability.
- ▶ A redetermination of fiscal constraint is required.

Technical Amendment:

- ▶ Changes to technical information that does impact policy or programmed projects, ie: performance targets, data updates, asset information.
- ▶ Must be approved by Commission or Executive Board. **Public comment opportunity is available at the meeting.**

Emergency Amendment:

- ▶ NIRPC Executive Director authorizes a TIP amendment without public process or Commission if:
 - ▶ **1)** public well-being or safety is at risk; or
 - ▶ **2)** lapse or loss of federal funds is at risk.
- ▶ A redetermination of fiscal constraint is required.

Path to address public comments

Comments received during a comment period will be reported to the Commission via a “Public Comment Report.” The Report will be made available on the NIRPC website and included with draft plans before adoption. The Report will constitute the formal response to comments and will contain the following: **1)** the original comment, as received; **2)** a recommendation by staff on how the final plan may address the substance of the comment; and **3)** a notation on whether or not the recommendation is a major or minor revision.

Any such recommendation to revise a draft plan that proposes: **1)** Policy revisions; **2)** Adds a project not previously subjected to public review; or **3)** deletes a project subjected to public review, will be considered a major revision and will trigger an additional public comment period. All other recommendations will be regarded as minor revisions representing comments that are more general. Advisory Committee(s) or the Commission will consider recommendations at their discretion.

Public Comment Period (*per Engage NWI policy*)

Recommended major revisions?

The commission may accept or modify major revisions and start new full comment period

The Commission may reject major revisions and adopt the plan

Recommended minor revisions?

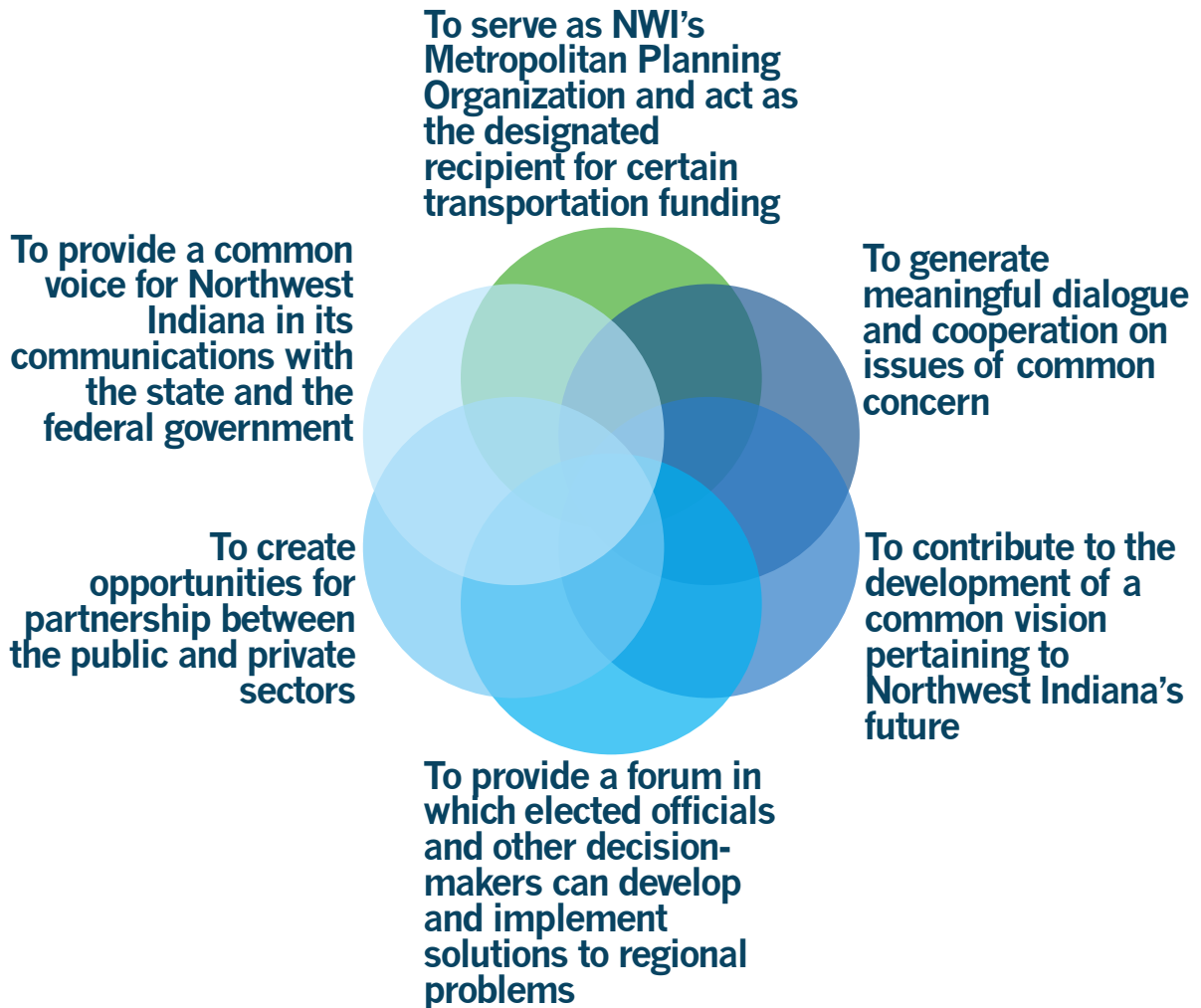
The Commission may accept, reject, or modify minor revisions and adopt the plan

Second Public Comment Period (*per Engage NWI policy*)

The Commission may accept, reject, or modify major revisions and adopt the plan. *Public engagement ends.*

This page intentionally left blank.

NIRPC's Role in the Region



For more information:

Visit:

www.nirpc.org

Contact:

Public Participation Planner at comments@nirpc.org
or 219-763-6060

Request alternative formats of plans or meeting materials:

mthorne@nirpc.org or 219-763-6060

1601158 (Ver 3) 20-03 STATUS Programmed **FEDERAL**

Title: Roadway Improvement Program / Intersection Improvements (Roundabout) at 109th Ave at Iowa St. **Route:** N/A
Description: 109th is a very busy road with a high crash count. This will improve traffic flow and make this intersection safer.
Project Type: Intersection or Intersection Groups **AQ Exempt:** Non-Exempt **District:** LaPorte
County: Lake **Limits:** Primary Crossstreet: 109th, Secondary Crossstreet: Iowa

FED FY	REVENUE SOURCE	PE	RW	CN	CE	TOTAL
2020	Local Fund	\$0	\$125,000	\$0	\$0	\$125,000
2021	Local Fund	\$0	\$0	\$1,265,000	\$0	\$1,265,000
<2020	Prior	\$295,267	\$0	\$0	\$0	\$295,267
2020-2024 TOTAL		\$0	\$125,000	\$1,265,000	\$0	\$1,390,000
ALL YEARS TOTAL		\$295,267	\$125,000	\$1,265,000	\$0	\$1,685,267

Region: Northwestern MPO

Lead Agency: Crown Point

Previously Approved Version

1601158 (Ver 2) 20-00

Title: Roadway Improvement Program / Intersection Improvements (Roundabout) at 109th Ave at Iowa St. **Route:** N/A
Description: 109th is a very busy road with a high crash count. This will improve traffic flow and make this intersection safer.
Project Type: Intersection or Intersection Groups **AQ Exempt:** Non-Exempt **District:** LaPorte
County: Lake **Limits:** Primary Crossstreet: 109th, Secondary Crossstreet: Iowa

FED FY	REVENUE SOURCE	PE	RW	CN	CE	TOTAL
2020	HSIP Chicago UZA	\$0	\$112,500	\$0	\$0	\$112,500
2020	Local Fund	\$0	\$12,500	\$0	\$0	\$12,500
2021	HSIP Chicago UZA	\$0	\$0	\$1,138,500	\$0	\$1,138,500
2021	Local Fund	\$0	\$0	\$126,500	\$0	\$126,500
<2020	Prior	\$295,267	\$0	\$0	\$0	\$295,267
2020-2024 TOTAL		\$0	\$125,000	\$1,265,000	\$0	\$1,390,000
ALL YEARS TOTAL		\$295,267	\$125,000	\$1,265,000	\$0	\$1,685,267

Region: Northwestern MPO

Lead Agency: Crown Point

NIRPC26004E		(Ver 1) 20-03	STATUS New Project			FEDERAL																																				
Title:	IHB bike trail from Hammond to Indianapolis blvd					Route: N/A																																				
Description:	construct a bike trail from Hammond to Indianapolis blvd																																									
Project Type:	Bicycle Enhancement	AQ Exempt:	Exempt		District: LaPorte																																					
County:	Lake	Limits:																																								
<table border="1"> <thead> <tr> <th>FED FY</th> <th>REVENUE SOURCE</th> <th>PE</th> <th>RW</th> <th>CN</th> <th>CE</th> <th>TOTAL</th> </tr> </thead> <tbody> <tr> <td>2020</td> <td>Rec Trails Program</td> <td>\$0</td> <td>\$40,000</td> <td>\$0</td> <td>\$0</td> <td>\$40,000</td> </tr> <tr> <td>2021</td> <td>Rec Trails Program</td> <td>\$0</td> <td>\$0</td> <td>\$185,000</td> <td>\$0</td> <td>\$185,000</td> </tr> <tr> <td colspan="2">2020-2024 TOTAL</td> <td>\$0</td> <td>\$40,000</td> <td>\$185,000</td> <td>\$0</td> <td>\$225,000</td> </tr> <tr> <td colspan="2">ALL YEARS TOTAL</td> <td>\$0</td> <td>\$40,000</td> <td>\$185,000</td> <td>\$0</td> <td>\$225,000</td> </tr> </tbody> </table>								FED FY	REVENUE SOURCE	PE	RW	CN	CE	TOTAL	2020	Rec Trails Program	\$0	\$40,000	\$0	\$0	\$40,000	2021	Rec Trails Program	\$0	\$0	\$185,000	\$0	\$185,000	2020-2024 TOTAL		\$0	\$40,000	\$185,000	\$0	\$225,000	ALL YEARS TOTAL		\$0	\$40,000	\$185,000	\$0	\$225,000
FED FY	REVENUE SOURCE	PE	RW	CN	CE	TOTAL																																				
2020	Rec Trails Program	\$0	\$40,000	\$0	\$0	\$40,000																																				
2021	Rec Trails Program	\$0	\$0	\$185,000	\$0	\$185,000																																				
2020-2024 TOTAL		\$0	\$40,000	\$185,000	\$0	\$225,000																																				
ALL YEARS TOTAL		\$0	\$40,000	\$185,000	\$0	\$225,000																																				
Region: Northwestern MPO				Lead Agency: East Chicago																																						

1901792 (Ver 2) 20-03 STATUS **Programmed** **FEDERAL**

Title: Planning / 2020 TOD Planning **Route:** N/A
Description: This project is for GPTC's transit planning to identify and design transit-oriented development (TOD) improvements in implementation of the Livable Broadway Regional Plan. The end-product will be recommended transit amenity and TOD improvements at various stops on Broadway in Gary and Merrillville, to be implemented via project GPTC TOD II.
Project Type: Transit - Planning/Oversight **AQ Exempt:** Non-Exempt **District:** LaPorte
County: Lake **Limits:** Not Location Specific

FED FY	REVENUE SOURCE	PE	RW	CN	CE	TOTAL
2020	FTA 5307 Chicago UZA	\$0	\$0	\$80,000	\$0	\$80,000
2020	Local Fund	\$0	\$0	\$20,000	\$0	\$20,000
2020-2024 TOTAL		\$0	\$0	\$100,000	\$0	\$100,000
ALL YEARS TOTAL		\$0	\$0	\$100,000	\$0	\$100,000

Region: Northwestern MPO

Lead Agency: GPTC

Previously Approved Version

NIRPC160041 (Ver 1) 20-00

Title: Planning / 2020 TOD Planning **Route:** N/A
Description: This project is for GPTC's transit planning to identify and design transit-oriented development (TOD) improvements in implementation of the Livable Broadway Regional Plan. The end-product will be recommended transit amenity and TOD improvements at various stops on Broadway in Gary and Merrillville, to be implemented via project GPTC TOD II.
Project Type: Transit - Planning/Oversight **AQ Exempt:** Non-Exempt **District:** LaPorte
County: Lake **Limits:** Not Location Specific

FED FY	REVENUE SOURCE	PE	RW	CN	CE	TOTAL
2020	FTA 5307 Chicago UZA	\$0	\$0	\$80,000	\$0	\$80,000
2020	Local Fund	\$0	\$0	\$20,000	\$0	\$20,000
2020-2024 TOTAL		\$0	\$0	\$100,000	\$0	\$100,000
ALL YEARS TOTAL		\$0	\$0	\$100,000	\$0	\$100,000

Region: Northwestern MPO

Lead Agency: GPTC

1600418 (Ver 4) 20-03 STATUS **Programmed** **FEDERAL**

Title: Road Rehab (3R/4R Standards) at Airport Rd; Phase 1 **Route:** N/A
Description: Airport Road 3R/4R Reconstruction: Cline Ave to EJ&E RR Bridge; Phase 1
Project Type: Roadway Reconstruction/Rehabilitation **AQ Exempt:** Non-Exempt **District:** LaPorte
County: Lake **Limits:** From Cline Ave to EJ&E RR bridge of Distance (mile) 1.32

FED FY	REVENUE SOURCE	PE	RW	CN	CE	TOTAL
2020	Local Fund	\$0	\$0	\$0	\$58,750	\$58,750
2020	STBG Chicago UZA	\$0	\$0	\$0	\$235,000	\$235,000
<2020	Prior	\$0	\$0	\$3,292,600	\$0	\$3,292,600
2020-2024 TOTAL		\$0	\$0	\$0	\$293,750	\$293,750
ALL YEARS TOTAL		\$0	\$0	\$3,292,600	\$293,750	\$3,586,350

Region: Northwestern MPO **Lead Agency:** Gary

Previously Approved Version

1600418 (Ver 3) 20-02

Title: Road Rehab (3R/4R Standards) at Airport Rd; Phase 1 **Route:** N/A
Description: Airport Road 3R/4R Reconstruction: Cline Ave to EJ&E RR Bridge; Phase 1
Project Type: Roadway Reconstruction/Rehabilitation **AQ Exempt:** Non-Exempt **District:** LaPorte
County: Lake **Limits:** From Cline Ave to EJ&E RR bridge of Distance (mile) 1.32

FED FY	REVENUE SOURCE	PE	RW	CN	CE	TOTAL
2020	Local Fund	\$0	\$0	\$0	\$25,000	\$25,000
2020	STBG Chicago UZA	\$0	\$0	\$0	\$100,000	\$100,000
<2020	Prior	\$0	\$0	\$3,292,600	\$0	\$3,292,600
2020-2024 TOTAL		\$0	\$0	\$0	\$125,000	\$125,000
ALL YEARS TOTAL		\$0	\$0	\$3,292,600	\$125,000	\$3,417,600

Region: Northwestern MPO **Lead Agency:** Gary

1802975 (Ver 2) 20-03 STATUS **Programmed** **FEDERAL**

Title: Road Rehabilitation (3R/4R) Airport Rd Phase 2 **Route:** N/A
Description: Road Rehabilitation (3R/4R Standards) Cline Ave to E J & E railroad bridge; Phase 2
Project Type: Roadway Reconstruction/Rehabilitation **AQ Exempt:** Exempt **District:** LaPorte
County: Lake **Limits:**

FED FY	REVENUE SOURCE	PE	RW	CN	CE	TOTAL
2022	Local Fund	\$0	\$0	\$179,200	\$0	\$179,200
2022	STBG Chicago UZA	\$0	\$0	\$716,800	\$0	\$716,800
2020-2024 TOTAL		\$0	\$0	\$896,000	\$0	\$896,000
ALL YEARS TOTAL		\$0	\$0	\$896,000	\$0	\$896,000

Region: Northwestern MPO **Lead Agency:** Gary

Previously Approved Version

1802975 (Ver 1) 20-02

Title: Road Rehabilitation (3R/4R) Airport Rd Phase 2 **Route:** N/A
Description: Road Rehabilitation (3R/4R Standards) Cline Ave to E J & E railroad bridge; Phase 2
Project Type: Roadway Reconstruction/Rehabilitation **AQ Exempt:** Exempt **District:** LaPorte
County: Lake **Limits:**

FED FY	REVENUE SOURCE	PE	RW	CN	CE	TOTAL
2020	Local Fund	\$0	\$33,750	\$0	\$0	\$33,750
2020	STBG Chicago UZA	\$0	\$135,000	\$0	\$0	\$135,000
2022	Local Fund	\$0	\$0	\$179,200	\$0	\$179,200
2022	STBG Chicago UZA	\$0	\$0	\$716,800	\$0	\$716,800
2020-2024 TOTAL		\$0	\$168,750	\$896,000	\$0	\$1,064,750
ALL YEARS TOTAL		\$0	\$168,750	\$896,000	\$0	\$1,064,750

Region: Northwestern MPO **Lead Agency:** Gary

1601145 (Ver 4) 20-03 STATUS Programmed **FEDERAL**

Title: Multi-use Trail Program / Bike/Pedestrian Facilities at Marquette Trail **Route:** N/A
Description: from State St at Rabin Plaza to Toll Road overpass at Kosciusko St
Project Type: Bicycle Enhancement **AQ Exempt:** Non-Exempt **District:** LaPorte
County: Lake **Limits:** Marquette Trail from State St to Kosciusko St of Distance (mile) 2.11

FED FY	REVENUE SOURCE	PE	RW	CN	CE	TOTAL
2020	CMAQ Chicago UZA	\$0	\$540,000	\$0	\$0	\$540,000
2020	Local Fund	\$0	\$135,000	\$0	\$0	\$135,000
2021	CMAQ Chicago UZA	\$0	\$0	\$1,200,000	\$0	\$1,200,000
2021	Local Fund	\$0	\$0	\$300,000	\$0	\$300,000
<2020	Prior	\$400,000	\$0	\$0	\$0	\$400,000
2020-2024 TOTAL		\$0	\$675,000	\$1,500,000	\$0	\$2,175,000
ALL YEARS TOTAL		\$400,000	\$675,000	\$1,500,000	\$0	\$2,575,000

Region: Northwestern MPO

Lead Agency: Hammond

Previously Approved Version

1601145 (Ver 3) 20-00

Title: Multi-use Trail Program / Bike/Pedestrian Facilities at Marquette Trail **Route:** N/A
Description: from State St at Rabin Plaza to Toll Road overpass at Kosciusko St
Project Type: Bicycle Enhancement **AQ Exempt:** Non-Exempt **District:** LaPorte
County: Lake **Limits:** Marquette Trail from State St to Kosciusko St of Distance (mile) 2.11

FED FY	REVENUE SOURCE	PE	RW	CN	CE	TOTAL
2020	CMAQ Chicago UZA	\$0	\$360,000	\$0	\$0	\$360,000
2020	Local Fund	\$0	\$90,000	\$0	\$0	\$90,000
2021	CMAQ Chicago UZA	\$0	\$0	\$1,200,000	\$0	\$1,200,000
2021	Local Fund	\$0	\$0	\$300,000	\$0	\$300,000
<2020	Prior	\$400,000	\$0	\$0	\$0	\$400,000
2020-2024 TOTAL		\$0	\$450,000	\$1,500,000	\$0	\$1,950,000
ALL YEARS TOTAL		\$400,000	\$450,000	\$1,500,000	\$0	\$2,350,000

Region: Northwestern MPO

Lead Agency: Hammond

1901904 (Ver 2) 20-03 STATUS Deleted **FEDERAL**

Title: Stormwater Improvements on Nevada St **Route:** N/A
Description: Stormwater improvements on Nevada St, south of 109th. Includes roadway drainage and stormwater system.
Project Type: Other **AQ Exempt:** Exempt **District:** LaPorte
County: Lake **Limits:**

FED FY	REVENUE SOURCE	PE	RW	CN	CE	TOTAL
--------	----------------	----	----	----	----	-------

Region: Northwestern MPO **Lead Agency:** Hammond

Previously Approved Version

1901904 (Ver 1) 20-00

Title: Stormwater Improvements on Nevada St **Route:** N/A
Description: Stormwater improvements on Nevada St, south of 109th. Includes roadway drainage and stormwater system.
Project Type: Other **AQ Exempt:** Exempt **District:** LaPorte
County: Lake **Limits:**

FED FY	REVENUE SOURCE	PE	RW	CN	CE	TOTAL
2020	Local Fund	\$88,000	\$0	\$200,000	\$0	\$288,000
2021	TAP Chicago UZA	\$0	\$0	\$200,000	\$0	\$200,000
2020-2024 TOTAL		\$88,000	\$0	\$400,000	\$0	\$488,000
ALL YEARS TOTAL		\$88,000	\$0	\$400,000	\$0	\$488,000

Region: Northwestern MPO **Lead Agency:** Hammond

1901377 (Ver 1) 20-03 STATUS **New Project** STATE

Title: District Bridge Project (Rehabilitation) **Route:** N/A
Description: US 35 NB at GT&W RR, Railroad Str., 0.42mi N of US 6, Bridge Deck Overlay in LaPorte County.
Project Type: Bridge Deck Overlay **AQ Exempt:** Exempt **District:** LaPorte
County: Laporte **Limits:**

FED FY	REVENUE SOURCE	PE	RW	CN	CE	TOTAL
2020	State Match	\$94,750	\$0	\$0	\$0	\$94,750
2021	State Match	\$0	\$0	\$10,000	\$0	\$10,000
2022	State Match	\$0	\$0	\$629,509	\$56,500	\$686,009
2020-2024 TOTAL		\$94,750	\$0	\$639,509	\$56,500	\$790,759
ALL YEARS TOTAL		\$94,750	\$0	\$639,509	\$56,500	\$790,759

Region: Northwestern MPO **Lead Agency:** INDOT

1901379 (Ver 1) 20-03 STATUS **New Project** STATE

Title: District Bridge Project (Rehabilitation) **Route:** N/A
Description: SR 912 Over N&S RR, 0.25mi W of I-80, Bridge Deck Overlay in Lake County
Project Type: Bridge Deck Overlay **AQ Exempt:** Exempt **District:** LaPorte
County: Lake **Limits:**

FED FY	REVENUE SOURCE	PE	RW	CN	CE	TOTAL
2020	State Match	\$235,000	\$0	\$0	\$0	\$235,000
2021	State Match	\$0	\$0	\$10,000	\$0	\$10,000
2022	State Match	\$0	\$0	\$1,647,663	\$150,000	\$1,797,663
2020-2024 TOTAL		\$235,000	\$0	\$1,657,663	\$150,000	\$2,042,663
ALL YEARS TOTAL		\$235,000	\$0	\$1,657,663	\$150,000	\$2,042,663

Region: Northwestern MPO **Lead Agency:** INDOT

1901382 (Ver 1) 20-03 STATUS **New Project** STATE

Title: District Bridge Project (Rehabilitation) **Route:** N/A
Description: SR 212 over CSS & SB RR (NICTD RR), 1.05mi N of US 20, Bridge Deck Overlay in LaPorte County
Project Type: Bridge Deck Overlay **AQ Exempt:** Exempt **District:** LaPorte
County: Laporte **Limits:**

FED FY	REVENUE SOURCE	PE	RW	CN	CE	TOTAL
2020	State Match	\$112,000	\$0	\$0	\$0	\$112,000
2021	State Match	\$0	\$0	\$10,000	\$0	\$10,000
2022	State Match	\$0	\$0	\$760,141	\$68,000	\$828,141
2020-2024 TOTAL		\$112,000	\$0	\$770,141	\$68,000	\$950,141
ALL YEARS TOTAL		\$112,000	\$0	\$770,141	\$68,000	\$950,141

Region: Northwestern MPO **Lead Agency:** INDOT

1901389 (Ver 1) 20-03 STATUS **New Project** STATE

Title: District Bridge Project (Rehabilitation) **Route:** N/A
Description: I 80 Burr St at I-80 EB/WB Ramp, 1.51mi E of SR 912, Bridge Deck Overlay in Lake County
Project Type: Bridge Deck Overlay **AQ Exempt:** Exempt **District:** LaPorte
County: Lake **Limits:**

FED FY	REVENUE SOURCE	PE	RW	CN	CE	TOTAL
2020	State Match	\$284,650	\$0	\$0	\$0	\$284,650
2021	State Match	\$0	\$0	\$10,000	\$0	\$10,000
2022	State Match	\$0	\$0	\$1,991,443	\$183,100	\$2,174,543
2020-2024 TOTAL		\$284,650	\$0	\$2,001,443	\$183,100	\$2,469,193
ALL YEARS TOTAL		\$284,650	\$0	\$2,001,443	\$183,100	\$2,469,193

Region: Northwestern MPO **Lead Agency:** INDOT

1901401 (Ver 1) 20-03 STATUS **New Project** STATE

Title: District Bridge Project (Rehabilitation) **Route:** N/A
Description: SR 2, SR 49 NB at SR 2 EB/WB, 1.13mi N of US 30 Bridge Painting in Porter County
Project Type: Bridge Painting **AQ Exempt:** Exempt **District:** LaPorte
County: Porter **Limits:**

FED FY	REVENUE SOURCE	PE	RW	CN	CE	TOTAL
2020	State Match	\$40,000	\$0	\$0	\$0	\$40,000
2021	State Match	\$0	\$0	\$10,000	\$0	\$10,000
2022	State Match	\$0	\$0	\$219,538	\$20,000	\$239,538
2020-2024 TOTAL		\$40,000	\$0	\$229,538	\$20,000	\$289,538
ALL YEARS TOTAL		\$40,000	\$0	\$229,538	\$20,000	\$289,538

Region: Northwestern MPO **Lead Agency:** INDOT

1901468 (Ver 1) 20-03 STATUS **New Project** STATE

Title: District Bridge Project (Rehabilitation) **Route:** N/A
Description: US 421 Over CF&E RR, Bailey Rd, Road, 0.37mi S of US 30, Bridge Thin Deck Overlay in LaPorte County
Project Type: Bridge Thin Deck Overlay **AQ Exempt:** Exempt **District:** LaPorte
County: Laporte **Limits:**

FED FY	REVENUE SOURCE	PE	RW	CN	CE	TOTAL
2020	State Match	\$71,500	\$0	\$0	\$0	\$71,500
2021	State Match	\$0	\$0	\$10,000	\$0	\$10,000
2022	State Match	\$0	\$0	\$452,344	\$41,000	\$493,344
2020-2024 TOTAL		\$71,500	\$0	\$462,344	\$41,000	\$574,844
ALL YEARS TOTAL		\$71,500	\$0	\$462,344	\$41,000	\$574,844

Region: Northwestern MPO **Lead Agency:** INDOT

1901357		(Ver 1) 20-03	STATUS New Project				STATE																																										
Title:	District Pavement Project (Interstate)					Route:	N/A																																										
Description:	I 65 US 30 to 0.62mi N of I-80/94 (Central Ave), Concrete Pavement Restoration (CPR) in Lake County.																																																
Project Type:	Concrete Pavement Restoration (CPR)	AQ Exempt:	Exempt			District:	LaPorte																																										
County:	Lake	Limits:																																															
<table border="1"> <thead> <tr> <th>FED FY</th> <th>REVENUE SOURCE</th> <th>PE</th> <th>RW</th> <th>CN</th> <th>CE</th> <th>TOTAL</th> </tr> </thead> <tbody> <tr> <td>2020</td> <td>State Match</td> <td>\$1,411,000</td> <td>\$0</td> <td>\$0</td> <td>\$0</td> <td>\$1,411,000</td> </tr> <tr> <td>2021</td> <td>State Match</td> <td>\$0</td> <td>\$0</td> <td>\$10,000</td> <td>\$0</td> <td>\$10,000</td> </tr> <tr> <td>2022</td> <td>State Match</td> <td>\$0</td> <td>\$0</td> <td>\$9,058,398</td> <td>\$581,000</td> <td>\$9,639,398</td> </tr> <tr> <td colspan="2">2020-2024 TOTAL</td> <td>\$1,411,000</td> <td>\$0</td> <td>\$9,068,398</td> <td>\$581,000</td> <td>\$11,060,398</td> </tr> <tr> <td colspan="2">ALL YEARS TOTAL</td> <td>\$1,411,000</td> <td>\$0</td> <td>\$9,068,398</td> <td>\$581,000</td> <td>\$11,060,398</td> </tr> </tbody> </table>								FED FY	REVENUE SOURCE	PE	RW	CN	CE	TOTAL	2020	State Match	\$1,411,000	\$0	\$0	\$0	\$1,411,000	2021	State Match	\$0	\$0	\$10,000	\$0	\$10,000	2022	State Match	\$0	\$0	\$9,058,398	\$581,000	\$9,639,398	2020-2024 TOTAL		\$1,411,000	\$0	\$9,068,398	\$581,000	\$11,060,398	ALL YEARS TOTAL		\$1,411,000	\$0	\$9,068,398	\$581,000	\$11,060,398
FED FY	REVENUE SOURCE	PE	RW	CN	CE	TOTAL																																											
2020	State Match	\$1,411,000	\$0	\$0	\$0	\$1,411,000																																											
2021	State Match	\$0	\$0	\$10,000	\$0	\$10,000																																											
2022	State Match	\$0	\$0	\$9,058,398	\$581,000	\$9,639,398																																											
2020-2024 TOTAL		\$1,411,000	\$0	\$9,068,398	\$581,000	\$11,060,398																																											
ALL YEARS TOTAL		\$1,411,000	\$0	\$9,068,398	\$581,000	\$11,060,398																																											
Region: Northwestern MPO				Lead Agency: INDOT																																													

1901361		(Ver 1) 20-03	STATUS New Project				STATE																																										
Title:	District Pavement Project (Non-I)					Route:	N/A																																										
Description:	US 30 IL State Line to US 41 , Concrete Pavement Restoration (CPR) in Lake County																																																
Project Type:	Concrete Pavement Restoration (CPR)	AQ Exempt:	Exempt			District:	LaPorte																																										
County:	Lake	Limits:																																															
<table border="1"> <thead> <tr> <th>FED FY</th> <th>REVENUE SOURCE</th> <th>PE</th> <th>RW</th> <th>CN</th> <th>CE</th> <th>TOTAL</th> </tr> </thead> <tbody> <tr> <td>2020</td> <td>State Match</td> <td>\$663,850</td> <td>\$0</td> <td>\$0</td> <td>\$0</td> <td>\$663,850</td> </tr> <tr> <td>2021</td> <td>State Match</td> <td>\$0</td> <td>\$20,000</td> <td>\$10,000</td> <td>\$0</td> <td>\$30,000</td> </tr> <tr> <td>2022</td> <td>State Match</td> <td>\$0</td> <td>\$0</td> <td>\$4,277,533</td> <td>\$273,350</td> <td>\$4,550,883</td> </tr> <tr> <td colspan="2">2020-2024 TOTAL</td> <td>\$663,850</td> <td>\$20,000</td> <td>\$4,287,533</td> <td>\$273,350</td> <td>\$5,244,733</td> </tr> <tr> <td colspan="2">ALL YEARS TOTAL</td> <td>\$663,850</td> <td>\$20,000</td> <td>\$4,287,533</td> <td>\$273,350</td> <td>\$5,244,733</td> </tr> </tbody> </table>								FED FY	REVENUE SOURCE	PE	RW	CN	CE	TOTAL	2020	State Match	\$663,850	\$0	\$0	\$0	\$663,850	2021	State Match	\$0	\$20,000	\$10,000	\$0	\$30,000	2022	State Match	\$0	\$0	\$4,277,533	\$273,350	\$4,550,883	2020-2024 TOTAL		\$663,850	\$20,000	\$4,287,533	\$273,350	\$5,244,733	ALL YEARS TOTAL		\$663,850	\$20,000	\$4,287,533	\$273,350	\$5,244,733
FED FY	REVENUE SOURCE	PE	RW	CN	CE	TOTAL																																											
2020	State Match	\$663,850	\$0	\$0	\$0	\$663,850																																											
2021	State Match	\$0	\$20,000	\$10,000	\$0	\$30,000																																											
2022	State Match	\$0	\$0	\$4,277,533	\$273,350	\$4,550,883																																											
2020-2024 TOTAL		\$663,850	\$20,000	\$4,287,533	\$273,350	\$5,244,733																																											
ALL YEARS TOTAL		\$663,850	\$20,000	\$4,287,533	\$273,350	\$5,244,733																																											
Region: Northwestern MPO				Lead Agency: INDOT																																													

1701532	(Ver 1) 20-03	STATUS New Project	STATE
Title:	District Pavement Project (Non-I)		Route: N/A
Description:	SR 212 From US 20 to US 12, HMA Overlay, Preventive Maintenance in LaPorte County.		
Project Type:	HMA Overlay, Preventive Maintenance	AQ Exempt: Exempt	District: LaPorte
County:	Laporte	Limits:	

FED FY	REVENUE SOURCE	PE	RW	CN	CE	TOTAL
2020	State Match	\$133,600	\$0	\$0	\$0	\$133,600
2021	State Match	\$0	\$0	\$1,928,500	\$0	\$1,928,500
2020-2024 TOTAL		\$133,600	\$0	\$1,928,500	\$0	\$2,062,100
ALL YEARS TOTAL		\$133,600	\$0	\$1,928,500	\$0	\$2,062,100

Region: Northwestern MPO	Lead Agency: INDOT
---------------------------------	---------------------------

1901358	(Ver 1) 20-03	STATUS New Project	STATE
Title:	District Pavement Project (Non-I)		Route: N/A
Description:	SR 2 IL. State Line to the S Jct of US 41, HMA Overlay, Preventive Maintenance in Lake County		
Project Type:	HMA Overlay, Preventive Maintenance	AQ Exempt: Exempt	District: LaPorte
County:	Lake	Limits:	

FED FY	REVENUE SOURCE	PE	RW	CN	CE	TOTAL
2020	State Match	\$246,500	\$0	\$0	\$0	\$246,500
2021	State Match	\$0	\$0	\$10,000	\$0	\$10,000
2022	State Match	\$0	\$0	\$1,612,434	\$101,500	\$1,713,934
2020-2024 TOTAL		\$246,500	\$0	\$1,622,434	\$101,500	\$1,970,434
ALL YEARS TOTAL		\$246,500	\$0	\$1,622,434	\$101,500	\$1,970,434

Region: Northwestern MPO	Lead Agency: INDOT
---------------------------------	---------------------------

1901364 (Ver 1) 20-03 STATUS **New Project** STATE

Title: District Pavement Project (Non-I) **Route:** N/A
Description: US 6 2.44mi W of SR 149 (Scottsdale Rd) to SR 149, HMA Overlay, Preventive Maintenance in Porter County.
Project Type: HMA Overlay, Preventive Maintenance **AQ Exempt:** Exempt **District:** LaPorte
County: Porter **Limits:**

FED FY	REVENUE SOURCE	PE	RW	CN	CE	TOTAL
2020	State Match	\$316,200	\$0	\$0	\$0	\$316,200
2021	State Match	\$0	\$0	\$80,000	\$0	\$80,000
2022	State Match	\$0	\$0	\$2,068,363	\$150,000	\$2,218,363
2020-2024 TOTAL		\$316,200	\$0	\$2,148,363	\$150,000	\$2,614,563
ALL YEARS TOTAL		\$316,200	\$0	\$2,148,363	\$150,000	\$2,614,563

Region: Northwestern MPO **Lead Agency:** INDOT

1901365 (Ver 1) 20-03 STATUS **New Project** STATE

Title: District Pavement Project (Non-I) **Route:** N/A
Description: SR 2, 0.88mi N of US 231 to US 30, HMA Overlay, Preventive Maintenance in Porter County, 12.57 miles in length.
Project Type: HMA Overlay, Preventive Maintenance **AQ Exempt:** Exempt **District:** LaPorte
County: Porter **Limits:**

FED FY	REVENUE SOURCE	PE	RW	CN	CE	TOTAL
2020	State Match	\$773,500	\$0	\$0	\$0	\$773,500
2021	State Match	\$0	\$0	\$75,000	\$0	\$75,000
2022	State Match	\$0	\$0	\$5,065,895	\$300,000	\$5,365,895
2020-2024 TOTAL		\$773,500	\$0	\$5,140,895	\$300,000	\$6,214,395
ALL YEARS TOTAL		\$773,500	\$0	\$5,140,895	\$300,000	\$6,214,395

Region: Northwestern MPO **Lead Agency:** INDOT

1801500 (Ver 3) 20-03 STATUS **Programmed** **FEDERAL**

Title: Interchange Modification **Route:** I- 65
Description: Interchange Modification, I-65 & 109th, Roundabout with two lanes EB, one lane WB. This will improve the LOS from E/F to A/B, greatly improving congestion now and in the future as this area grows. This project is expected to be substantially complete by November 1 2022. According to the Regional Significance Guidance document, since this is an Interchange Modification on an Interstate Highway, an AQ Consultation is required.
Project Type: Interchange Modification **AQ Exempt:** Exempt **District:** LaPorte
County: Lake **Limits:** Primary Interchange: , Secondary Interchange:

FED FY	REVENUE SOURCE	PE	RW	CN	CE	TOTAL
2020	NHPP Interstate	\$500,000	\$185,000	\$0	\$0	\$685,000
2020	STBG Chicago UZA	\$0	\$112,500	\$0	\$0	\$112,500
2021	NHPP Interstate	\$0	\$0	\$3,000,000	\$0	\$3,000,000
2021	STBG Chicago UZA	\$0	\$0	\$1,138,500	\$0	\$1,138,500
2020-2024 TOTAL		\$500,000	\$297,500	\$4,138,500	\$0	\$4,936,000
ALL YEARS TOTAL		\$500,000	\$297,500	\$4,138,500	\$0	\$4,936,000

Region: Northwestern MPO

Lead Agency: INDOT

Previously Approved Version

1801500 (Ver 2) 20-01

Title: Interchange Modification **Route:** I- 65
Description: Interchange Modification, I-65 & 109th, Roundabout with two lanes EB, one lane WB. This will improve the LOS from E/F to A/B, greatly improving congestion now and in the future as this area grows. This project is expected to be substantially complete by November 1 2022. According to the Regional Significance Guidance document, since this is an Interchange Modification on an Interstate Highway, an AQ Consultation is required.
Project Type: Interchange Modification **AQ Exempt:** Exempt **District:** LaPorte
County: Lake **Limits:** Primary Interchange: , Secondary Interchange:

FED FY	REVENUE SOURCE	PE	RW	CN	CE	TOTAL
2020	NHPP Interstate	\$500,000	\$185,000	\$0	\$0	\$685,000
2021	NHPP Interstate	\$0	\$0	\$3,000,000	\$0	\$3,000,000
2020-2024 TOTAL		\$500,000	\$185,000	\$3,000,000	\$0	\$3,685,000
ALL YEARS TOTAL		\$500,000	\$185,000	\$3,000,000	\$0	\$3,685,000

Region: Northwestern MPO

Lead Agency: INDOT

1700021	(Ver 1) 20-03	STATUS New Project					STATE
Title:	Added Travel Lanes Project					Route: N/A	
Description:	US 20 Intersections of US 20 with CR 325W & CR 300W, 1.1mi W of SR 39, Intersect. Improv. W/ Added Turn Lanes in LaPorte County.						
Project Type:	Intersect. Improv. W/ Added Turn Lanes	AQ Exempt:	Exempt			District:	LaPorte
County:	Laporte	Limits:					

FED FY	REVENUE SOURCE	PE	RW	CN	CE	TOTAL
2022	State Match	\$0	\$0	\$1,483,882	\$0	\$1,483,882
2020-2024 TOTAL		\$0	\$0	\$1,483,882	\$0	\$1,483,882
ALL YEARS TOTAL		\$0	\$0	\$1,483,882	\$0	\$1,483,882

Region: Northwestern MPO **Lead Agency:** INDOT

1600693	(Ver 1) 20-03	STATUS New Project					STATE
Title:	Added Travel Lanes Project					Route: N/A	
Description:	SR 51 Intersection of SR 51/Cleveland Rd at SR 130, Intersection Improvement, Roundabout in Lake County						
Project Type:	Intersection Improvement, Roundabout	AQ Exempt:	Exempt			District:	LaPorte
County:	Lake	Limits:					

FED FY	REVENUE SOURCE	PE	RW	CN	CE	TOTAL
2022	State Match	\$0	\$0	\$1,658,058	\$0	\$1,658,058
2020-2024 TOTAL		\$0	\$0	\$1,658,058	\$0	\$1,658,058
ALL YEARS TOTAL		\$0	\$0	\$1,658,058	\$0	\$1,658,058

Region: Northwestern MPO **Lead Agency:** INDOT

1700022 (Ver 1) 20-03 STATUS **New Project** STATE

Title: Intersection Improvement Project **Route:** N/A
Description: US 231 Intersection of US 231 & Cline Ave, 2.0mi E of US 41, Intersection Improvement, Roundabout in Lake County.
Project Type: Intersection Improvement, Roundabout **AQ Exempt:** Exempt **District:** LaPorte
County: Lake **Limits:**

FED FY	REVENUE SOURCE	PE	RW	CN	CE	TOTAL
2021	State Match	\$0	\$54,000	\$20,000	\$0	\$74,000
2022	State Match	\$0	\$0	\$2,437,899	\$0	\$2,437,899
2020-2024 TOTAL		\$0	\$54,000	\$2,457,899	\$0	\$2,511,899
ALL YEARS TOTAL		\$0	\$54,000	\$2,457,899	\$0	\$2,511,899

Region: Northwestern MPO **Lead Agency:** INDOT

1700087 (Ver 1) 20-03 STATUS **New Project** STATE

Title: District Bridge Project (Replacement) **Route:** N/A
Description: US 41 NB over Brown Ditch, 3.54mi S of SR 2, Replace Superstructure in Lake County.
Project Type: Replace Superstructure **AQ Exempt:** Exempt **District:** LaPorte
County: Lake **Limits:**

FED FY	REVENUE SOURCE	PE	RW	CN	CE	TOTAL
2021	State Match	\$0	\$0	\$50,000	\$0	\$50,000
2022	State Match	\$0	\$0	\$995,644	\$0	\$995,644
2020-2024 TOTAL		\$0	\$0	\$1,045,644	\$0	\$1,045,644
ALL YEARS TOTAL		\$0	\$0	\$1,045,644	\$0	\$1,045,644

Region: Northwestern MPO **Lead Agency:** INDOT

1701509	(Ver 1) 20-03	STATUS New Project					STATE
Title:	District Small Structure Project					Route: N/A	
Description:	US 231 3.50 mi W of SR 55, Small Structure Pipe Lining in Lake County.						
Project Type:	Small Structure Pipe Lining	AQ Exempt:	Exempt			District: LaPorte	
County:	Lake	Limits:					

FED FY	REVENUE SOURCE	PE	RW	CN	CE	TOTAL
2022	State Match	\$0	\$0	\$292,500	\$0	\$292,500
2020-2024 TOTAL		\$0	\$0	\$292,500	\$0	\$292,500
ALL YEARS TOTAL		\$0	\$0	\$292,500	\$0	\$292,500

Region: Northwestern MPO **Lead Agency:** INDOT

1600701	(Ver 1) 20-03	STATUS New Project					STATE
Title:	Intersection Improvement Project					Route: N/A	
Description:	SR 149 Intersection of SR 149 at CR 875 N / Robbins Road, Vertical Sight Correction in Porter County.						
Project Type:	Vertical Sight Correction	AQ Exempt:	Exempt			District: LaPorte	
County:	Porter	Limits:					

FED FY	REVENUE SOURCE	PE	RW	CN	CE	TOTAL
2021	State Match	\$0	\$65,000	\$90,000	\$0	\$155,000
2022	State Match	\$0	\$0	\$1,277,198	\$0	\$1,277,198
2020-2024 TOTAL		\$0	\$65,000	\$1,367,198	\$0	\$1,432,198
ALL YEARS TOTAL		\$0	\$65,000	\$1,367,198	\$0	\$1,432,198

Region: Northwestern MPO **Lead Agency:** INDOT

1902029 (Ver 1) 20-03 STATUS **New Project** **LOCAL**

Title: Bridge Inspection FY 21-24 **Route:** N/A
Description: Bridge Inspection FY 21-24
Project Type: Bridge - Other **AQ Exempt:** Exempt **District:** LaPorte
County: Laporte **Limits:**

FED FY	REVENUE SOURCE	PE	RW	CN	CE	TOTAL
2021	Local Bridge	\$166,674	\$0	\$0	\$0	\$166,674
2021	Local Fund	\$41,669	\$0	\$0	\$0	\$41,669
2022	Local Bridge	\$6,392	\$0	\$0	\$0	\$6,392
2022	Local Fund	\$1,598	\$0	\$0	\$0	\$1,598
2023	Local Bridge	\$144,934	\$0	\$0	\$0	\$144,934
2023	Local Fund	\$36,234	\$0	\$0	\$0	\$36,234
2024	Local Bridge	\$6,646	\$0	\$0	\$0	\$6,646
2024	Local Fund	\$1,662	\$0	\$0	\$0	\$1,662
2020-2024 TOTAL		\$405,809	\$0	\$0	\$0	\$405,809
ALL YEARS TOTAL		\$405,809	\$0	\$0	\$0	\$405,809

Region: Northwestern MPO

Lead Agency: LaPorte County

NIRPC26004E		(Ver 1) 20-03	STATUS New Project			FEDERAL																																				
Title:	Veterans' Trail 113th to Delaware Parkway (Phase 1)- FUTURE PROJECT					Route: N/A																																				
Description:	Veterans' Trail 113th to Delaware Parkway (Phase 1); parallel to US 231																																									
Project Type:	Bicycle Enhancement	AQ Exempt:	Exempt		District: LaPorte																																					
County:	Lake	Limits:																																								
<table border="1"> <thead> <tr> <th>FED FY</th> <th>REVENUE SOURCE</th> <th>PE</th> <th>RW</th> <th>CN</th> <th>CE</th> <th>TOTAL</th> </tr> </thead> <tbody> <tr> <td>2024</td> <td>Local Fund</td> <td>\$0</td> <td>\$0</td> <td>\$661,480</td> <td>\$0</td> <td>\$661,480</td> </tr> <tr> <td>2024</td> <td>STBG Chicago UZA</td> <td>\$0</td> <td>\$0</td> <td>\$2,645,920</td> <td>\$0</td> <td>\$2,645,920</td> </tr> <tr> <td colspan="2">2020-2024 TOTAL</td> <td>\$0</td> <td>\$0</td> <td>\$3,307,400</td> <td>\$0</td> <td>\$3,307,400</td> </tr> <tr> <td colspan="2">ALL YEARS TOTAL</td> <td>\$0</td> <td>\$0</td> <td>\$3,307,400</td> <td>\$0</td> <td>\$3,307,400</td> </tr> </tbody> </table>								FED FY	REVENUE SOURCE	PE	RW	CN	CE	TOTAL	2024	Local Fund	\$0	\$0	\$661,480	\$0	\$661,480	2024	STBG Chicago UZA	\$0	\$0	\$2,645,920	\$0	\$2,645,920	2020-2024 TOTAL		\$0	\$0	\$3,307,400	\$0	\$3,307,400	ALL YEARS TOTAL		\$0	\$0	\$3,307,400	\$0	\$3,307,400
FED FY	REVENUE SOURCE	PE	RW	CN	CE	TOTAL																																				
2024	Local Fund	\$0	\$0	\$661,480	\$0	\$661,480																																				
2024	STBG Chicago UZA	\$0	\$0	\$2,645,920	\$0	\$2,645,920																																				
2020-2024 TOTAL		\$0	\$0	\$3,307,400	\$0	\$3,307,400																																				
ALL YEARS TOTAL		\$0	\$0	\$3,307,400	\$0	\$3,307,400																																				
Region: Northwestern MPO				Lead Agency: Lake County																																						

NIRPC16003E		(Ver 2) 20-03	STATUS Programmed				FEDERAL
Title:	Planning / 2020 TIP Management Software					Route:	N/A
Description:	Funds for online RTIP software						
Project Type:	Transit - Planning/Oversight	AQ Exempt:	Non-Exempt			District:	LaPorte
County:	Porter	Limits:	Not Location Specific				

FED FY	REVENUE SOURCE	PE	RW	CN	CE	TOTAL
2020	Local Fund	\$0	\$0	\$12,500	\$0	\$12,500
2020	STBG Chicago UZA	\$0	\$0	\$50,000	\$0	\$50,000
2020-2024 TOTAL		\$0	\$0	\$62,500	\$0	\$62,500
ALL YEARS TOTAL		\$0	\$0	\$62,500	\$0	\$62,500

Region: Northwestern MPO **Lead Agency:** NIRPC

NIRPC16003E		(Ver 1) 20-00	STATUS Programmed				FEDERAL
Title:	Planning / 2020 TIP Management Software					Route:	N/A
Description:	Funds for online RTIP software						
Project Type:	Transit - Planning/Oversight	AQ Exempt:	Non-Exempt			District:	LaPorte
County:	Porter	Limits:	Not Location Specific				

FED FY	REVENUE SOURCE	PE	RW	CN	CE	TOTAL
2020	Local Fund	\$0	\$0	\$12,500	\$0	\$12,500
2020	STBG Chicago UZA	\$0	\$0	\$50,000	\$0	\$50,000
2020-2024 TOTAL		\$0	\$0	\$62,500	\$0	\$62,500
ALL YEARS TOTAL		\$0	\$0	\$62,500	\$0	\$62,500

Region: Northwestern MPO **Lead Agency:** NIRPC

1802932 (Ver 1) 20-03 STATUS **New Project** **LOCAL**

Title: Bridge Replacement **Route:** N/A
Description: Bridge #149 Waverly Road over the Little Calumet River
Project Type: Bridge Replacement **AQ Exempt:** Non-Exempt **District:** LaPorte
County: Porter **Limits:**

FED FY	REVENUE SOURCE	PE	RW	CN	CE	TOTAL
2020	Local Fund	\$415,000	\$0	\$0	\$0	\$415,000
2021	Local Fund	\$0	\$110,000	\$0	\$0	\$110,000
2024	Local Bridge	\$0	\$0	\$1,840,000	\$276,000	\$2,116,000
2024	Local Fund	\$0	\$0	\$460,000	\$69,000	\$529,000
2020-2024 TOTAL		\$415,000	\$110,000	\$2,300,000	\$345,000	\$3,170,000
ALL YEARS TOTAL		\$415,000	\$110,000	\$2,300,000	\$345,000	\$3,170,000

Region: Northwestern MPO

Lead Agency: Porter County

1802941 (Ver 1) 20-03 STATUS **New Project** LOCAL

Title: Bridge Replacement **Route:** N/A
Description: Bridge Replacement on C.R 200 West (Babcock Rd) over Damon Run Bridge #131; 0.7 miles north of US 6
Project Type: Bridge Replacement **AQ Exempt:** Exempt **District:** LaPorte
County: Porter **Limits:**

FED FY	REVENUE SOURCE	PE	RW	CN	CE	TOTAL
2020	Local Fund	\$280,000	\$0	\$0	\$0	\$280,000
2021	Local Fund	\$0	\$70,000	\$0	\$0	\$70,000
2024	Local Bridge	\$0	\$0	\$960,000	\$144,000	\$1,104,000
2024	Local Fund	\$0	\$0	\$240,000	\$36,000	\$276,000
2020-2024 TOTAL		\$280,000	\$70,000	\$1,200,000	\$180,000	\$1,730,000
ALL YEARS TOTAL		\$280,000	\$70,000	\$1,200,000	\$180,000	\$1,730,000

Region: Northwestern MPO

Lead Agency: Porter County

Northwestern MPO TIP SUMMARY BY LEAD AGENCY

	Prior	FY 2020	FY 2021	FY 2022	FY 2023	FY 2024	FY 2025	Beyond	Total
Crown Point	\$590,534	\$250,000	\$2,530,000	\$0	\$0	\$0	\$0	\$0	\$3,370,534
East Chicago	\$0	\$40,000	\$185,000	\$0	\$0	\$0	\$0	\$0	\$225,000
GPTC	\$0	\$200,000	\$0	\$0	\$0	\$0	\$0	\$0	\$200,000
Gary	\$6,585,200	\$587,500	\$0	\$1,792,000	\$0	\$0	\$0	\$0	\$8,964,700
Hammond	\$800,000	\$1,413,000	\$3,200,000	\$0	\$0	\$0	\$0	\$0	\$5,413,000
INDOT	\$0	\$5,865,050	\$9,611,000	\$37,852,892	\$0	\$0	\$0	\$0	\$53,328,942
LaPorte County	\$0	\$0	\$208,343	\$7,990	\$181,168	\$8,308	\$0	\$0	\$405,809
Lake County	\$0	\$0	\$0	\$0	\$0	\$3,307,400	\$0	\$0	\$3,307,400
NIRPC	\$0	\$125,000	\$0	\$0	\$0	\$0	\$0	\$0	\$125,000
Porter County	\$0	\$695,000	\$180,000	\$0	\$0	\$4,025,000	\$0	\$0	\$4,900,000
TOTAL	\$7,975,734	\$9,175,550	\$15,914,343	\$39,652,882	\$181,168	\$7,340,708	\$0	\$0	\$80,240,385